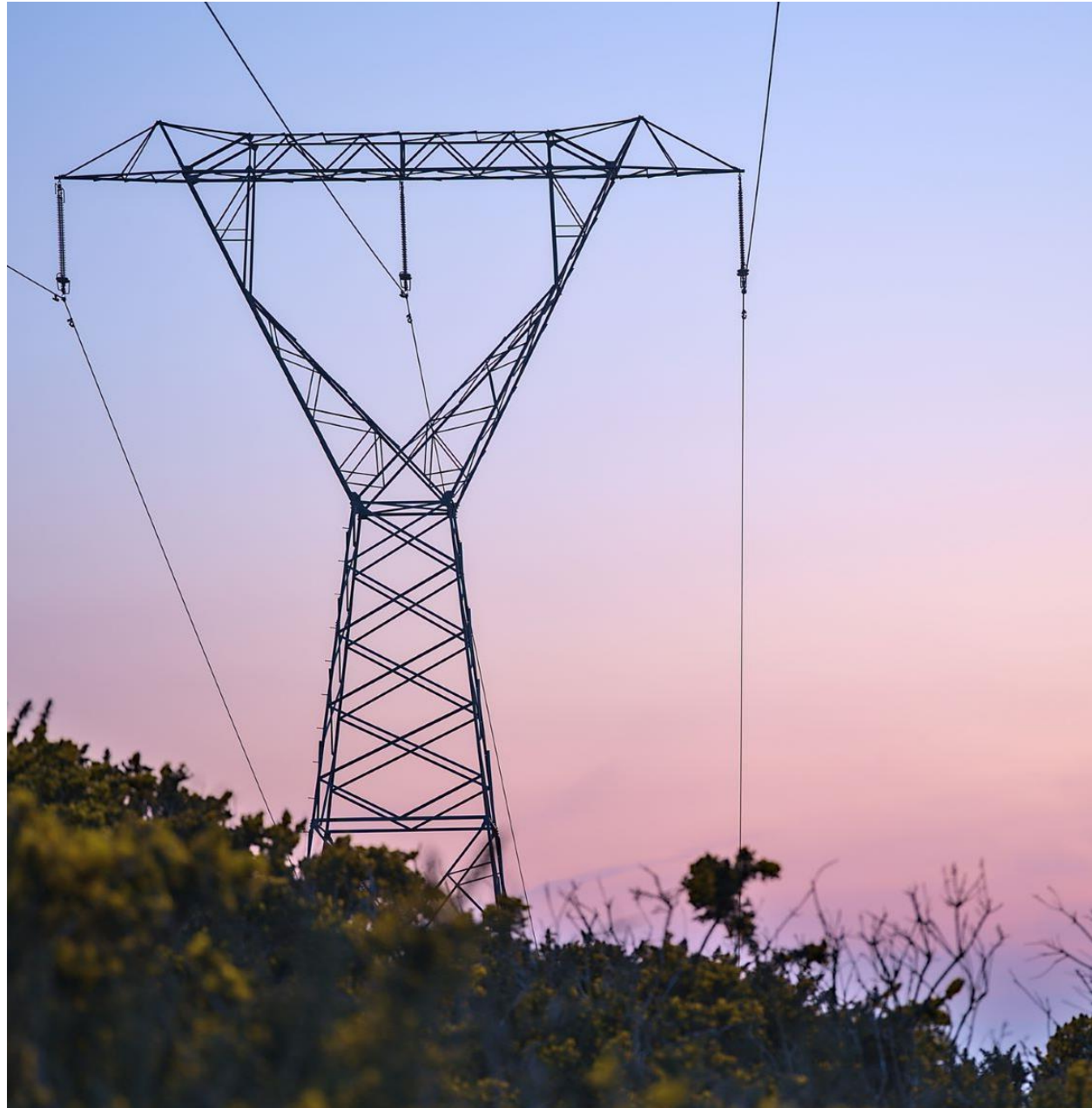


# SEMOpx Day-Ahead Market (DAM) 30-Minute Market Time Unit (MTU)

## Weekly Update on SDAC Joint Member Testing

Covered Testing Period: 07/04/2025 - 10/04/2025



# SEMOpX 30-Minute Market Time Unit (MTU)

## Weekly Update on SDAC Joint Member Tests

### On This Report

- This report shows the outcomes of the SDAC Joint Member Tests for the implementation of 30-Minute MTU in the SEM.

### Notes for Future Tests

- SDAC TSOs and NEMOs agreed to exchange the scenario originally planned for 22/04 (LCC Day-light saving time) with that of the 28/04 (normal day) - as indicated on slide 4.
- Members are reminded and encouraged to participate in the SDAC Member Testing.

### Participation Level - SEMOpX Market

	07/04/2025	08/04/2025	09/04/2025	10/04/2025
# Participants (PT)	9	7	10	15
#SU	6	7	11	11
#AU	3	1	3	3
#GU	47	49	107	110



# SEMOpx 30-Minute Market Time Unit (MTU)

## Weekly Update on SDAC Joint Member Tests

Day	#	Test Date	Scenario	Result of Test	Notes
Mon	1	07/04	Normal day (with nominations)	Completed with delay	Delay caused by issue in test environment. Delay in publication of Post Trading Market Results and BidFiles on SEMOpx Website*.
Tue	2	08/04	Full decoupling with shadow auction (with nominations)	Completed	Delay in publication of Post Trading Market Results and BidFiles on SEMOpx Website*.
Wed	3	09/04	Partial decoupling Nordic region (with Nordic regional coupling) (with nominations)	Completed	Delay in publication of Post Trading Market Results and BidFiles on SEMOpx Website*.
Thu	4	10/04	Second calculation due to bidding error management	Completed	Delay in publication of Post Trading Market Results and BidFiles on SEMOpx Website*.

\*Note: The root cause of the delay in publication of the Post Trading Market Results and BidFiles was due to a file transfer issue. The files were generated without issues immediately after the auctions; however, there was a delay in retrieval of the files. This issue was confirmed to be linked to the test environment only.

# SEMOpx 30-Minute Market Time Unit (MTU) Test Calendar

## Upcoming Tests

- Detailed instructions for each test can be found in the [SEMOpx information document](#) available on the SEMOpx Website.
- Changes are indicated in blue.

Day	#	Testing Day	Scenario
Tu	5	22 April 2025	Normal Day
We	6	23 April 2025	Max / min price reached + curtailment
Th	7	24 April 2025	No liquidity in a given time resolution (15Min MTU)***
Mo	8	28 April 2025	Daylight Saving Time (DST) - Long Clock Change (LCC)
Tu	9	29 April 2025	Normal Day
We	10	30 April 2025	Normal Day
Mo	11	5 May 2025	Max number of blocks***
Tu	12	6 May 2025	Paradoxically rejected hourly curves***
We	13	7 May 2025	Re-execution of previous scenario or Normal Day
Mo	14	12 May 2025	Re-execution of previous scenario or Normal Day
Tu	15	13 May 2025	Re-execution of previous scenario or Normal Day
We	16	14 May 2025	Re-execution of previous scenario or Normal Day
Th	17	15 May 2025	Re-execution of previous scenario or Normal Day

\*\*\*For SEMOpx Members  
- normal day 30' MTU  
orders to be submitted  
(Scenario does not  
impact the SEM)

# SEMOpX 30-Minute Market Time Unit (MTU)

## Test Timings

Indicative timings for member tests are as follows:

Step	*Normal Day Test Timings	Normal Day with Specific Instructions	Incident Scenario Maximum Test Target Timings
Order Book Gate Closure Time (OBK GCT)	13:00 BST	**12:30 BST	13:00 BST
Publication of preliminary results	13:55 BST	13:55 BST	15:05 BST
Final release of results	14:05 BST	14:05 BST	15:15 BST

\* The normal day test timings may be adjusted until Member Test start.

\*\* 12:30 Gate Closure Timing (GCT) will only be applied when running the normal day with specific instructions (cf. below) to give NEMOs time to check the submitted orders and potentially modify them to be in line with the scenario. 12:30 GCT is not reflective of production timings + 2 hours.