

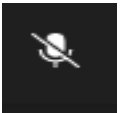
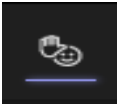
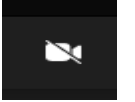
# Scalable Complex Orders Project Meeting #7

13<sup>th</sup> May 2022



# Housekeeping Rules

- ✓ *Keep your video switched off*
- ✓ *Raise the hand if you have a question*
- ✓ *Keep your line muted unless asking a question*



# Agenda

## **SCO Training Session (60 min)**

- DEMO in ETS Client
- Overview of API XML Changes
- Training Session Q&A

## **Project Management (15 min)**

- Project Plan Update

## **Simulation Logistics (15 min)**

- Simulation Environment Access Details
- Logistics Details

## **Member Readiness (15 min)**

- Update from members on readiness

## **Wrap Up (15 min)**

- Next Steps
- Q&A

# SCO Training Session Overview

## ○ Demo ETS Client

- ✓ Open an ETS client: use a user with scalable complex orders portfolios permission
- ✓ Show the new screen updates on the global view screen
- ✓ Open the scalable complex order screen: show the updates + submit an order manually
- ✓ Submit an order with copy/paste via excel
- ✓ Show the Mkt results screens updates
- ✓ Go through the Mkt results files + trade report

## ○ API XML Changes:

- ✓ Look at changes to API XML files

# ETS Client SCO Example

Market Global View - My view [Epx Trading System]

File View Format Settings Window Help

Day Type

Auction Day  Date Range

From Date  Auction Status  Auction Group  Auction Name  Market Area  Area  Participant

Delivery Day	Area	Portfolio	Auction Date Time	Order Book Status	Duration	Currency	Linear	Last Update Time	Block	Last Update Time	Scalable Complex	Last Update Time	Mkt Results
14/05/2022	DE-AMP-15min	A2A-T01	PWR-15-call-DE-D+1 2022-05-13-15:00 (cet/cest)	OBK Open	15 min	EUR	none	All	none	All	none	none	none
14/05/2022	FR-RTE	A2A-T01	PWR-MRC-D+1 2022-05-13-12:00 (cet/cest)	OBK Idle	60 min	EUR	none	All	none	All	N/A	none	none
14/05/2022	FR-RTE	A2A-T02	PWR-MRC-D+1 2022-05-13-12:00 (cet/cest)	OBK Idle	60 min	EUR	none	All	none	All	N/A	none	none
14/05/2022	GB-NG-30min	A2A-T01	PWR-30-call-GB-D+1 2022-05-13-16:30 (cet/cest)	OBK Open	30 min	GBP	none	All	none	All	none	none	none
14/05/2022	GB-NG-IDA1	A2A-T01	PWR-SEM-GB-D+1 2022-05-13-14:30 (cet/cest)	OBK Idle	30 min	GBP	none	All	N/A	All	N/A	none	none
14/05/2022	GB-NG-IDA1	A2A-T02	PWR-SEM-GB-D+1 2022-05-13-14:30 (cet/cest)	OBK Idle	30 min	GBP	none	All	N/A	All	N/A	none	none
14/05/2022	NI-SONI-DA	A2A-T01	PWR-MRC-D+1 2022-05-13-16:00 (cet/cest)	OBK Open	60 min	EUR	none	All	none	All	N/A	none	none
14/05/2022	NI-SONI-DA	A2A-T02	PWR-MRC-D+1 2022-05-13-16:00 (cet/cest)	OBK Open	60 min	EUR	none	All	none	All	none	none	none
14/05/2022	NL-TENNETNL	A2A-T01	PWR-MRC-D+1 2022-05-13-12:00 (cet/cest)	OBK Idle	60 min	EUR	none	All	none	All	N/A	none	none
14/05/2022	NL-TENNETNL	A2A-T02	PWR-MRC-D+1 2022-05-13-12:00 (cet/cest)	OBK Idle	60 min	EUR	none	All	none	All	N/A	none	none
14/05/2022	AT-APG	A2A-PM1	PWR-MRC-D+1 2022-05-13-12:00 (cet/cest)	OBK Idle	60 min	EUR	none	All	N/A	All	N/A	none	none
14/05/2022	AT-APG	A2A-PW1	PWR-MRC-D+1 2022-05-13-12:00 (cet/cest)	OBK Idle	60 min	EUR	none	All	N/A	All	N/A	none	none
14/05/2022	DE-AMP	A2A-PM1	PWR-MRC-D+1 2022-05-13-12:00 (cet/cest)	OBK Idle	60 min	EUR	none	All	N/A	All	N/A	none	none
14/05/2022	DE-AMP	A2A-PW1	PWR-MRC-D+1 2022-05-13-12:00 (cet/cest)	OBK Idle	60 min	EUR	none	All	N/A	All	N/A	none	none
14/05/2022	FR-RTE	A2A-PM1	PWR-MRC-D+1 2022-05-13-12:00 (cet/cest)	OBK Idle	60 min	EUR	none	All	N/A	All	N/A	none	none
14/05/2022	FR-RTE	A2A-PW1	PWR-MRC-D+1 2022-05-13-12:00 (cet/cest)	OBK Idle	60 min	EUR	none	All	N/A	All	N/A	none	none
14/05/2022	GB-NG	A2A-PM1	PWR-MRC-D+1 2022-05-13-10:20 (cet/cest)	OBK Open	60 min	GBP	none	All	N/A	All	N/A	none	none
14/05/2022	GB-NG	A2A-PW1	PWR-MRC-D+1 2022-05-13-10:20 (cet/cest)	OBK Open	60 min	GBP	none	All	N/A	All	N/A	none	none
14/05/2022	NI-SONI-DA	A2A-PM1	PWR-MRC-D+1 2022-05-13-16:00 (cet/cest)	OBK Open	60 min	EUR	none	All	N/A	All	N/A	none	none
14/05/2022	NI-SONI-DA	A2A-PW1	PWR-MRC-D+1 2022-05-13-16:00 (cet/cest)	OBK Open	60 min	EUR	none	All	N/A	All	N/A	none	none

Show Linear Show Block Show Scalable Complex Show Market Results Show Indexes Show Notification

Messages:

Time	Message
10 May 2022 14:24:38	Auction Result for Area Set: SEM-DA, auction time: 2022-05-10-16:00
10 May 2022 14:23:58	Submitted ScalableComplexOrder A2A-T02 / NI-SONI-DA / 60 min / 2022-05-10-14:00 / EPEXMO4
10 May 2022 14:21:54	Submitted ScalableComplexOrder A2A-T02 / NI-SONI-DA / 60 min / 2022-05-10-14:00 / EPEXMO4
25 April 2022 13:20:13	Auction Result for Area Set: 30-call-GB, auction time: 2022-04-25-16:30
25 April 2022 13:20:13	Auction Result for Area Set: 30-call-GB, auction time: 2022-04-25-16:30
25 April 2022 13:20:13	Auction Result for Area Set: 30-call-GB, auction time: 2022-04-25-16:30
25 April 2022 13:19:30	Auction Result for Area Set: 15-call-DE, auction time: 2022-04-25-15:00
25 April 2022 13:19:30	Auction Result for Area Set: 15-call-DE, auction time: 2022-04-25-15:00
25 April 2022 13:19:30	Auction Result for Area Set: 15-call-DE, auction time: 2022-04-25-15:00
25 April 2022 13:18:04	Auction Result for Area Set: SEM-DA, auction time: 2022-04-25-16:00
25 April 2022 13:18:04	Auction Result for Area Set: SEM-DA, auction time: 2022-04-25-16:00
25 April 2022 13:18:04	Auction Result for Area Set: SEM-DA, auction time: 2022-04-25-16:00
25 April 2022 13:12:54	Submitted ScalableComplexOrder A2A-T01 / GB-NG-30min / 30 min / 2022-04-25-14:30 / EPEXMO4
25 April 2022 13:11:12	Submitted ScalableComplexOrder A2A-T02 / NI-SONI-DA / 60 min / 2022-04-25-14:00 / EPEXMO4
25 April 2022 13:11:12	Submitted ScalableComplexOrder A2A-T02 / NI-SONI-DA / 60 min / 2022-04-25-14:00 / EPEXMO4
25 April 2022 13:11:12	Submitted ScalableComplexOrder A2A-T02 / CH-SGD / 60 min / 2022-04-25-14:00 / EPEXMO4
25 April 2022 13:11:03	Submitted ScalableComplexOrder A2A-T02 / NI-SONI-DA / 60 min / 2022-04-25-14:00 / EPEXMO4

- If you select any of your portfolios and you have necessary permission to submit SCO, you will be navigated to the screen on the next slide.
- If you click on any units and it is greyed out you do not have permission to submit the order.

# ETS Client SCO Example

Auction Date Time: 13 May 2022 - 12:00 cet/cest  
Auction Name: PWR-MRC-D+1  
Delivery Date: 14 May 2022  
Area: ROI-EIRGRID-DA  
Portfolio: GU\_400000  
Duration: 60 min



Import Bid Export Bid Delete Differences

(TR 295) The order should have at least one curve entered

Order - 60 min

Submit Several Delivery Days

Fixed Term

Schedule Stop Periods

Increase Gradient

Decrease Gradient

1

0

User Comment

Comment	Period (gmt/bst)	MAV	-500.00	4,000.00
	23 - 00			
	00 - 01			
	01 - 02			
	02 - 03			
	03 - 04			
	04 - 05			
	05 - 06			
	06 - 07			
	07 - 08			
	08 - 09			
	09 - 10			
	10 - 11			
	11 - 12			
	12 - 13			
	13 - 14			
	14 - 15			
	15 - 16			
	16 - 17			
	17 - 18			
	18 - 19			
	19 - 20			
	20 - 21			
	21 - 22			
	22 - 23			
	Sum		0.0	0.0

### Fixed Term:

- Is a mandatory value
- Can be "0"
- Cannot leave blank

### MAV:

- New column for entry

Add Prices Modify Price Remove Price Copy Line Paste Line Replicate To All Adjust to Price Limit

Close Submit

# ETS Client SCO Example

Day Type: Auction Day | Auction Name: PWR-MRC-D+1 | Auction Date Time: 16 May 2022 - 16:00 cet/cest | Area: NI-SONI-DA | Portfolio: ALPIQ-T02 | Duration: 60 min

EUR Stepwise ACTIVE

Import Bid | Export Bid | Delete | Differences: 1

No errors

Order - 1000001669963 - 60 min

Submit Several Delivery Days

Fixed Term: 1 | Schedule Stop Periods: 0 | Increase Gradient | Decrease Gradient

User Comment

Comment	Period (cet/cest)	MAV	-500.0	-108.1	-108.1	1,910.9	1,910.9	2,488.1	2,488.1	3,000.0
	00 - 01	30.0	-60.0	-60.0	-82.8	-82.8	-150.6	-150.6	-190.0	-190.0
	01 - 02	5.0	-10.0	-10.0	-15.4	-15.4	-55.1	-55.1	-80.0	-80.0
	02 - 03	25.0	-60.0	-60.0	-60.6	-60.6	-125.5	-125.5	-140.0	-140.0
	03 - 04	100.0	-60.0	-60.0	-80.8	-80.8	-97.2	-97.2	-174.0	-174.0
	04 - 05	67.0	-60.0	-60.0	-71.3	-71.3	-136.4	-136.4	-137.8	-137.8
	05 - 06	120.0	-60.0	-60.0	-118.1	-118.1	-120.8	-120.8	-180.2	-180.2
	06 - 07	87.0	-60.0	-60.0	-65.4	-65.4	-115.5	-115.5	-175.0	-175.0
	07 - 08	100.0	-30.0	-30.0	-34.1	-34.1	-99.4	-99.4	-111.2	-111.2
	08 - 09	60.0	-60.0	-60.0	-77.0	-77.0	-86.7	-86.7	-178.4	-178.4
	09 - 10	120.0	-60.0	-60.0	-124.9	-124.9	-134.9	-134.9	-186.6	-186.6
	10 - 11	0.0	-60.0	-60.0	-109.0	-109.0	-142.1	-142.1	-150.6	-150.6
	11 - 12	0.0	-10.0	-10.0	-10.7	-10.7	-95.0	-95.0	-196.7	-196.7
	12 - 13	120.0	-60.0	-60.0	-102.4	-102.4	-114.1	-114.1	-151.7	-151.7
	13 - 14	50.0	-40.0	-40.0	-41.6	-41.6	-55.6	-55.6	-168.5	-168.5
	14 - 15	146.0	-60.0	-60.0	-101.0	-101.0	-137.9	-137.9	-146.0	-146.0
	15 - 16	90.0	-60.0	-60.0	-116.3	-116.3	-136.2	-136.2	-197.1	-197.1
	16 - 17	60.0	-60.0	-60.0	-100.3	-100.3	-112.2	-112.2	-146.6	-146.6
	17 - 18	120.0	-60.0	-60.0	-71.8	-71.8	-84.6	-84.6	-162.2	-162.2
	18 - 19	25.0	-60.0	-60.0	-60.1	-60.1	-119.4	-119.4	-134.4	-134.4
	19 - 20	0.0	-60.0	-60.0	-109.1	-109.1	-130.9	-130.9	-199.6	-199.6
	20 - 21	120.0	-60.0	-60.0	-78.9	-78.9	-105.9	-105.9	-192.2	-192.2
	21 - 22	130.0	-30.0	-30.0	-32.6	-32.6	-109.2	-109.2	-133.5	-133.5
	22 - 23	20.0	-40.0	-40.0	-46.3	-46.3	-68.1	-68.1	-118.8	-118.8
	23 - 00	130.0	-60.0	-60.0	-107.5	-107.5	-135.6	-135.6	-137.8	-137.8
	Sum		-1,240.0	-1,240.0	-1,818.0	-1,818.0	-2,668.9	-2,668.9	-3,788.9	-3,788.9

Close Submit

Variable Term Removed

Increase Gradient & Decrease Gradient values are optional values

In this particular example:

- the MAV value is entered into ETS as a positive value (absolute value) but the negative value will be used in the system
- The MAV value does not need to equal the lowest volume, however it can be any value between 0 and 190 for Trading Period #1

**MAV:**

- Is a mandatory value for every Trading Period
- Is an absolute value (no usage of the negative sign to reflect sell order)
- Cannot leave blank but can be "0"

# ETS Client SCO Example

## Market Results

- Label Change

Market Results - My view [Epex Trading System]

File View Format Settings Window Help

Overall Bloc **Scalable Complex** Trade

Day Type

Auction Day

From Date: 25/04/2022 Area Set: SEM-DA Auction Name: PWR-MRC-D+1 Market Area: NI-DA Duration: 60 min Participant: None Portfolio: A2A-T02 Side: All

Export To Excel

Id	Area	Participant	Portfolio	Comment	Paradoxically Rejected	Activation	Currency	Total	1	2	3	4	5	6	7	8	9	10	11	12	13	14	15	16	17	18	19	20	21	22	23	24
10000001668971	NI-SONI-DA	A2A	A2A-T02		<input type="checkbox"/>	<input checked="" type="checkbox"/>	EUR	-1455.000	-60.0	-59.0	-60.6	-63.0	-62.0	-61.0	-60.0	-59.0	-62.0	-61.0	-60.0	-59.0	-60.0	-59.0	-63.0	-63.1	-62.1	-61.1	-60.1	-61.0	-60.0	-59.0	-58.0	-62.0

These results are Final



# ETS Client SCO Example

## Market Results

Market Results - My view [Epex Trading System]

File View Format Settings Window Help

Overall Block **Scalable Complex** Trade

Day Type

Auction Day

From Date: 12/05/2022 Area Set: SEM-DA Auction Name: PWR-MRC-D+1 Area: NI-SONI-DA Duration: 60 min Participant: A2A Portfolio: A2A-T02 Currency: EUR

Export To Excel Export Single To CSV Export All To CSV

Portfolio: A2A-T02

Period (cet/cest)	MCP (EUR/MWh)	MCV (MW)	Total Schedule			Linear Schedule			Block Schedule			Scalable Complex Schedule			
			Net	Purchase	Sale	Net	Purchase	Sale	Net	Purchase	Sale	Net	Purchase	Sale	
00 - 01			0.0	0.0	0.0	0.0	0.0	0.0	0.0	0.0	0.0	0.0	0.0	0.0	0.0
01 - 02			0.0	0.0	0.0	0.0	0.0	0.0	0.0	0.0	0.0	0.0	0.0	0.0	0.0
02 - 03			0.0	0.0	0.0	0.0	0.0	0.0	0.0	0.0	0.0	0.0	0.0	0.0	0.0
03 - 04			0.0	0.0	0.0	0.0	0.0	0.0	0.0	0.0	0.0	0.0	0.0	0.0	0.0
04 - 05			0.0	0.0	0.0	0.0	0.0	0.0	0.0	0.0	0.0	0.0	0.0	0.0	0.0
05 - 06			0.0	0.0	0.0	0.0	0.0	0.0	0.0	0.0	0.0	0.0	0.0	0.0	0.0
06 - 07			0.0	0.0	0.0	0.0	0.0	0.0	0.0	0.0	0.0	0.0	0.0	0.0	0.0
07 - 08			0.0	0.0	0.0	0.0	0.0	0.0	0.0	0.0	0.0	0.0	0.0	0.0	0.0
08 - 09			0.0	0.0	0.0	0.0	0.0	0.0	0.0	0.0	0.0	0.0	0.0	0.0	0.0
09 - 10			0.0	0.0	0.0	0.0	0.0	0.0	0.0	0.0	0.0	0.0	0.0	0.0	0.0
10 - 11			0.0	0.0	0.0	0.0	0.0	0.0	0.0	0.0	0.0	0.0	0.0	0.0	0.0
11 - 12			0.0	0.0	0.0	0.0	0.0	0.0	0.0	0.0	0.0	0.0	0.0	0.0	0.0
12 - 13			0.0	0.0	0.0	0.0	0.0	0.0	0.0	0.0	0.0	0.0	0.0	0.0	0.0
13 - 14			0.0	0.0	0.0	0.0	0.0	0.0	0.0	0.0	0.0	0.0	0.0	0.0	0.0
14 - 15			0.0	0.0	0.0	0.0	0.0	0.0	0.0	0.0	0.0	0.0	0.0	0.0	0.0
15 - 16			0.0	0.0	0.0	0.0	0.0	0.0	0.0	0.0	0.0	0.0	0.0	0.0	0.0
16 - 17			0.0	0.0	0.0	0.0	0.0	0.0	0.0	0.0	0.0	0.0	0.0	0.0	0.0
17 - 18			0.0	0.0	0.0	0.0	0.0	0.0	0.0	0.0	0.0	0.0	0.0	0.0	0.0
18 - 19			0.0	0.0	0.0	0.0	0.0	0.0	0.0	0.0	0.0	0.0	0.0	0.0	0.0
19 - 20			0.0	0.0	0.0	0.0	0.0	0.0	0.0	0.0	0.0	0.0	0.0	0.0	0.0
20 - 21			0.0	0.0	0.0	0.0	0.0	0.0	0.0	0.0	0.0	0.0	0.0	0.0	0.0
21 - 22			0.0	0.0	0.0	0.0	0.0	0.0	0.0	0.0	0.0	0.0	0.0	0.0	0.0
22 - 23			0.0	0.0	0.0	0.0	0.0	0.0	0.0	0.0	0.0	0.0	0.0	0.0	0.0
23 - 00			0.0	0.0	0.0	0.0	0.0	0.0	0.0	0.0	0.0	0.0	0.0	0.0	0.0
Sum/Avg	0.00	0	0.0	0.0	0.0	0.0	0.0	0.0	0.0	0.0	0.0	0.0	0.0	0.0	0.0
01-24 (Baseload)	0.00	0	0.0	0.0	0.0	0.0	0.0	0.0	0.0	0.0	0.0	0.0	0.0	0.0	0.0
09-20 (Peakload)	0.00	0	0.0	0.0	0.0	0.0	0.0	0.0	0.0	0.0	0.0	0.0	0.0	0.0	0.0
21-24 (Off-Peak-2)	0.00	0	0.0	0.0	0.0	0.0	0.0	0.0	0.0	0.0	0.0	0.0	0.0	0.0	0.0

# ETS Client – Import from Excel

## Members can import their bids/offers from excel to the ETS Client

- ✓ This functionality for SCO submissions is the same as CO submissions
- ✓ MAV, Prices and Volumes are the only values that can be imported
- ✓ Fixed Term, Scheduled Stop Condition, Increase Gradient and Decrease Gradient values must be manually entered to ETS Client
- ✓ Format of import file into ETS must be Excel file; Cannot be CSV file

Sample Excel Import File

Fixed Term	Schedule Stop Periods	Increase Gradient	Decrease Gradient							
1	1	4	1							
Comment	Period	MAV	-500	-108.1	-108.1	1910.9	1910.9	2488.1	2488.1	3000
	1	30	-60	-60	-82.8	-82.8	-150.6	-150.6	-190	-190
	2	5	-10	-10	-15.4	-15.4	-55.1	-55.1	-80	-80
	3	25	-60	-60	-60.6	-60.6	-125.5	-125.5	-140	-140
	4	100	-60	-60	-80.8	-80.8	-97.2	-97.2	-174	-174
	5	67	-60	-60	-71.3	-71.3	-136.4	-136.4	-137.8	-137.8
	6	120	-60	-60	-118.1	-118.1	-120.8	-120.8	-180.2	-180.2
	7	87	-60	-60	-65.4	-65.4	-115.5	-115.5	-175	-175
	8	100	-30	-30	-34.1	-34.1	-99.4	-99.4	-111.2	-111.2
	9	60	-60	-60	-77	-77	-86.7	-86.7	-178.4	-178.4
	10	120	-60	-60	-124.9	-124.9	-134.9	-134.9	-186.6	-186.6
	11	0	-60	-60	-109	-109	-142.1	-142.1	-150.6	-150.6
	12	0	-10	-10	-10.7	-10.7	-95	-95	-196.7	-196.7
	13	120	-60	-60	-102.4	-102.4	-114.1	-114.1	-151.7	-151.7
	14	50	-40	-40	-41.6	-41.6	-55.6	-55.6	-168.5	-168.5
	15	146	-60	-60	-101	-101	-137.9	-137.9	-146	-146
	16	90	-60	-60	-116.3	-116.3	-136.2	-136.2	-197.1	-197.1
	17	60	-60	-60	-100.3	-100.3	-112.2	-112.2	-146.6	-146.6
	18	120	-60	-60	-71.8	-71.8	-84.6	-84.6	-162.2	-162.2
	19	25	-60	-60	-60.1	-60.1	-119.4	-119.4	-134.4	-134.4
	20	0	-60	-60	-109.1	-109.1	-130.9	-130.9	-199.6	-199.6
	21	120	-60	-60	-78.9	-78.9	-105.9	-105.9	-192.2	-192.2
	22	130	-30	-30	-32.6	-32.6	-109.2	-109.2	-133.5	-133.5
	23	20	-40	-40	-46.3	-46.3	-68.1	-68.1	-118.8	-118.8
	24	130	-60	-60	-107.5	-107.5	-135.6	-135.6	-137.8	-137.8

Differences 1

No errors

Order - 10000001669963 - 60 min

Submit Several Delivery Days

Fixed Term: 
 Schedule Stop Periods: 
 Increase Gradient: 
 Decrease Gradient:

User Comment:

Comment	Period (cet/cest)	MAV	-500.0	-108.1	-108.1	1,910.9	1,910.9	2,488.1	2,488.1	3,000.0
00 - 01		30.0	-60.0	-60.0	-82.8	-82.8	-150.6	-150.6	-190.0	-190.0
01 - 02		5.0	-10.0	-10.0	-15.4	-15.4	-55.1	-55.1	-80.0	-80.0
02 - 03		25.0	-60.0	-60.0	-60.6	-60.6	-125.5	-125.5	-140.0	-140.0
03 - 04		100.0	-60.0	-60.0	-80.8	-80.8	-97.2	-97.2	-174.0	-174.0
04 - 05		67.0	-60.0	-60.0	-71.3	-71.3	-136.4	-136.4	-137.8	-137.8
05 - 06		120.0	-60.0	-60.0	-118.1	-118.1	-120.8	-120.8	-180.2	-180.2
06 - 07		87.0	-60.0	-60.0	-65.4	-65.4	-115.5	-115.5	-175.0	-175.0
07 - 08		100.0	-30.0	-30.0	-34.1	-34.1	-99.4	-99.4	-111.2	-111.2
08 - 09		60.0	-60.0	-60.0	-77.0	-77.0	-86.7	-86.7	-178.4	-178.4
09 - 10		120.0	-60.0	-60.0	-124.9	-124.9	-134.9	-134.9	-186.6	-186.6



## ETS 3.6.1 Overview of API Changes

Main changes in ETS 3.6.1 API as outlined below:

API Method (as of v3.5)	Method Rename (as of v3.6)	XML Tag Changes (as of v3.6)
<a href="#"><u>CancelComplexOrder</u></a>	<a href="#"><u>CancelScalableComplexOrder</u></a>	No change
<a href="#"><u>EnterComplexOrder</u></a>	<a href="#"><u>EnterScalableComplexOrder</u></a>	<ul style="list-style-type: none"><li>Removed existing XML tag <b>&lt;variable Term&gt;</b> in the API request</li><li>Added new XML tag <b>&lt;minimum Acceptance Volume&gt;</b> under the &lt;Curve&gt; group in the API request. It is mandatory.</li></ul>
<a href="#"><u>RetrieveComplexOrder</u></a>	<a href="#"><u>RetrieveScalableComplexOrder</u></a>	<ul style="list-style-type: none"><li>Removed existing XML tag <b>&lt;variable Term&gt;</b> in the API request</li><li>Added new XML tag <b>&lt;minimum Acceptance Volume&gt;</b> under the &lt;Curve&gt; group in the API request. It is mandatory.</li></ul>

Sample Files are available on SEMOpx Website and can be found [here](#).

# ETS Connections

## ETS Connections:

- **API**

- ✓ Impacted API members (i.e. who are active in Complex Order Submission) must upgrade their API apps to use ETS API 3.6.1 version
- ✓ API members who are impacted must use the WSDL version 3.6.1
- ✓ Members submitting SCO should upgrade to 3.6.1 version, while members submitting linear orders can continue with the current production version of the WSDL

- **ETS Client**

- ✓ ETS Client 3.6.2 version will need to be upgraded either automatically through the upgradable client or by manually downloading the client
  - Communication with full details will be issued to members.

# ETS API SCO Example

## Enter Scalable Complex Order – Request

```
44 <!--MAV value for Period = 1:-->
45 <urn:mav>1</urn:mav>
46 </urn:Curve>
47 <urn:Curve>
48 <urn:period>22</urn:period>
49 <!--Optional:-->
50 <!--urn:comment?</urn:comment-->
51 <!--1 or more repetitions:-->
52 <urn:CurvePoint>
53 <urn:price>-1500</urn:price>
54 <urn:volume>-0.1</urn:volume>
55 </urn:CurvePoint>
56 <urn:CurvePoint>
57 <urn:price>0.1</urn:price>
58 <urn:volume>-0.1</urn:volume>
59 </urn:CurvePoint>
60 <urn:CurvePoint>
61 <urn:price>0.1</urn:price>
62 <urn:volume>-1</urn:volume>
63 </urn:CurvePoint>
64 <urn:CurvePoint>
65 <urn:price>500</urn:price>
66 <urn:volume>-1</urn:volume>
67 </urn:CurvePoint>
68 <urn:CurvePoint>
69 <urn:price>500</urn:price>
70 <urn:volume>-99999.9</urn:volume>
71 </urn:CurvePoint>
72 <urn:CurvePoint>
73 <urn:price>9000</urn:price>
74 <urn:volume>-99999.9</urn:volume>
75 </urn:CurvePoint>
76 <!--MAV value for Period = 22:-->
77 <urn:mav>99999.9</urn:mav>
78 </urn:Curve>
79 <urn:fixed_Term>2</urn:fixed_Term>
80 <!--Optional:-->
81 <urn:increase_Gradient>9</urn:increase_Gradient>
82 <!--Optional:-->
83 <urn:decrease_Gradient>3</urn:decrease_Gradient>
84 <urn:schedule_Stop>3</urn:schedule_Stop>
85 </Order>
86 </urn:EnterScalableComplexOrder>
87 </soapenv:Body>
88 </soapenv:Envelope>
```

**MAV:**

- Is a mandatory value for every Trading Period / Curve Point
- Is an absolute value (no usage of the negative sign to reflect sell order)
- Cannot leave blank but can be "0"

**Variable Term Removed**

**Fixed Term:**

- Is a mandatory value
- Can be "0"
- Cannot leave blank

**- Label Change**



# ETS API SCO Example

## Enter Scalable Complex Order – Response

```
1 <SOAP-ENV:Envelope xmlns:SOAP-ENV="http://schemas.xmlsoap.org/soap/envelope/" xmlns:ns="urn:openaccess">
2   <SOAP-ENV:Body>
3     <ns:EnterScalableComplexOrderResponse>
4       <EnterScalableComplexOrderAcknowledgement>
5         <ns:state>ACK</ns:state>
6         <ns:Accepted-Order-ID>40000001668526</ns:Accepted-Order-ID>
7       </EnterScalableComplexOrderAcknowledgement>
8     </ns:EnterScalableComplexOrderResponse>
9   </SOAP-ENV:Body>
10 </SOAP-ENV:Envelope>
```

- No structural changes  
- Only label change

# ETS API SCO Example

## Retrieve Scalable Complex Orders – Response

```
new 1 x new 3 x new 5 x new 2 x new 5 x new 7 x new 6 x new 10 x new 9 x new 12 x new 13 x new 14 x new
297 <ns:CurvePoint>
298   <ns:price>9000.00</ns:price>
299   <ns:volume>-1.00</ns:volume>
300 </ns:CurvePoint>
301 <ns:mav>1.0</ns:mav>
302 </ns:Curve>
303 <ns:Curve>
304   <ns:period>23</ns:period>
305   <ns:comment/>
306   <ns:CurvePoint>
307     <ns:price>-9000.00</ns:price>
308     <ns:volume>-1.00</ns:volume>
309   </ns:CurvePoint>
310   <ns:CurvePoint>
311     <ns:price>9000.00</ns:price>
312     <ns:volume>-1.00</ns:volume>
313   </ns:CurvePoint>
314   <ns:mav>1.0</ns:mav>
315 </ns:Curve>
316 <ns:Curve>
317   <ns:period>24</ns:period>
318   <ns:comment/>
319   <ns:CurvePoint>
320     <ns:price>-9000.00</ns:price>
321     <ns:volume>-1.00</ns:volume>
322   </ns:CurvePoint>
323   <ns:CurvePoint>
324     <ns:price>9000.00</ns:price>
325     <ns:volume>-1.00</ns:volume>
326   </ns:CurvePoint>
327   <ns:mav>1.0</ns:mav>
328 </ns:Curve>
329 <ns:fixed_Term>3.00000001000</ns:fixed_Term>
330 <ns:increase_Gradient>1.31000</ns:increase_Gradient>
331 <ns:decrease_Gradient>2.30000</ns:decrease_Gradient>
332 <ns:schedule_Stop>2</ns:schedule_Stop>
333 <ns:orderId>10000001668513</ns:orderId>
334 <ns:lastUpdateTime>2022-03-22T16:24:14+01:00</ns:lastUpdateTime>
335 <ns:lastUpdateUser>PART1U01API</ns:lastUpdateUser>
336 <ns:version>29</ns:version>
337 </ns:Order>
338 </RetrieveScalableComplexOrdersResult>
339 </ns:RetrieveScalableComplexOrdersResponse>
340 </SOAP-ENV:Body>
341 </SOAP-ENV:Envelope>
```

MAV included for each response



# ETS API SCO Example

## Retrieve Market Results – Response

```
29 ;Price Index (EUR/MWh);Price Index (GBP/MWh);Volume Index (MW);Price Index (EUR/MWh);Volume Index (MW)
30 2022-03-22T23:00:00Z;1158,40;1000,00;4,0;3000,000;110,0
31 2022-03-23T00:00:00Z;1158,40;1000,00;4,0;3000,000;110,0
32 2022-03-23T01:00:00Z;1158,40;1000,00;4,0;3000,000;110,0
33 2022-03-23T02:00:00Z;1158,40;1000,00;4,0;3000,000;110,0
34 2022-03-23T03:00:00Z;1158,40;1000,00;4,0;3000,000;110,0
35 2022-03-23T04:00:00Z;1158,40;1000,00;4,0;3000,000;110,0
36 2022-03-23T05:00:00Z;1158,40;1000,00;4,0;3000,000;110,0
37 2022-03-23T06:00:00Z;1158,40;1000,00;4,0;3000,000;110,0
38 2022-03-23T07:00:00Z;1158,40;1000,00;4,0;3000,000;110,0
39 2022-03-23T08:00:00Z;1158,40;1000,00;4,0;3000,000;110,0
40 2022-03-23T09:00:00Z;1158,40;1000,00;4,0;3000,000;110,0
41 2022-03-23T10:00:00Z;1158,40;1000,00;4,0;3000,000;110,0
42 2022-03-23T11:00:00Z;1158,40;1000,00;4,0;3000,000;110,0
43 2022-03-23T12:00:00Z;1158,40;1000,00;4,0;3000,000;110,0
44 2022-03-23T13:00:00Z;1158,40;1000,00;4,0;3000,000;110,0
45 2022-03-23T14:00:00Z;1158,40;1000,00;4,0;3000,000;110,0
46 2022-03-23T15:00:00Z;1158,40;1000,00;4,0;3000,000;110,0
47 2022-03-23T16:00:00Z;1158,40;1000,00;4,0;3000,000;110,0
48 2022-03-23T17:00:00Z;1158,40;1000,00;4,0;3000,000;110,0
49 2022-03-23T18:00:00Z;1158,40;1000,00;4,0;3000,000;110,0
50 2022-03-23T19:00:00Z;1158,40;1000,00;4,0;3000,000;110,0
51 2022-03-23T20:00:00Z;1158,40;1000,00;4,0;3000,000;110,0
52 2022-03-23T21:00:00Z;1158,40;1000,00;4,0;3000,000;110,0
53 2022-03-23T22:00:00Z;1158,40;1000,00;4,0;3000,000;110,0
54 Sum/Avg;1158,40;1000,00;96,0;3000,000;2640,0
55 NI-SONI-DA;;;Participant: PART1;;;Portfolio: PART1-T01
56 ;;;Total Sched.;;;Linear Sched.;;;Block Sched.;;;Scalable Complex Sched.;;;Total Sched.;;;Linear Sched.;;;Block Sched.;;;Scalable Complex Sched.;;;
57 ;MCP (EUR/MWh);MCP (GBP/MWh);MCV (MW);Net;Purchase;Sale;Net;Purchase;Sale;Net;Purchase;Sale;Net;Purchase;Sale;Net;Purchase;Sale;Net;Purchase;Sale;
58 2022-03-22T23:00:00Z;1158,40;1000,00;4,0;-1,4;0;1,4;0;0;0;0;0;-1,4;0;1,4;-1,4;0;1,4;0;0;0;0;0;-1,4;0;1,4
59 2022-03-23T00:00:00Z;1158,40;1000,00;4,0;-1,4;0;1,4;0;0;0;0;0;-1,4;0;1,4;-1,4;0;1,4;0;0;0;0;0;-1,4;0;1,4
60 2022-03-23T01:00:00Z;1158,40;1000,00;4,0;-1,4;0;1,4;0;0;0;0;0;-1,4;0;1,4;-1,4;0;1,4;0;0;0;0;0;-1,4;0;1,4
61 2022-03-23T02:00:00Z;1158,40;1000,00;4,0;-1,4;0;1,4;0;0;0;0;0;-1,4;0;1,4;-1,4;0;1,4;0;0;0;0;0;-1,4;0;1,4
62 2022-03-23T03:00:00Z;1158,40;1000,00;4,0;-1,4;0;1,4;0;0;0;0;0;-1,4;0;1,4;-1,4;0;1,4;0;0;0;0;0;-1,4;0;1,4
63 2022-03-23T04:00:00Z;1158,40;1000,00;4,0;-1,4;0;1,4;0;0;0;0;0;-1,4;0;1,4;-1,4;0;1,4;0;0;0;0;0;-1,4;0;1,4
64 2022-03-23T05:00:00Z;1158,40;1000,00;4,0;-1,4;0;1,4;0;0;0;0;0;-1,4;0;1,4;-1,4;0;1,4;0;0;0;0;0;-1,4;0;1,4
65 2022-03-23T06:00:00Z;1158,40;1000,00;4,0;-1,4;0;1,4;0;0;0;0;0;-1,4;0;1,4;-1,4;0;1,4;0;0;0;0;0;-1,4;0;1,4
66 2022-03-23T07:00:00Z;1158,40;1000,00;4,0;-1,4;0;1,4;0;0;0;0;0;-1,4;0;1,4;-1,4;0;1,4;0;0;0;0;0;-1,4;0;1,4
67 2022-03-23T08:00:00Z;1158,40;1000,00;4,0;-1,4;0;1,4;0;0;0;0;0;-1,4;0;1,4;-1,4;0;1,4;0;0;0;0;0;-1,4;0;1,4
68 2022-03-23T09:00:00Z;1158,40;1000,00;4,0;-1,4;0;1,4;0;0;0;0;0;-1,4;0;1,4;-1,4;0;1,4;0;0;0;0;0;-1,4;0;1,4
69 2022-03-23T10:00:00Z;1158,40;1000,00;4,0;-1,4;0;1,4;0;0;0;0;0;-1,4;0;1,4;-1,4;0;1,4;0;0;0;0;0;-1,4;0;1,4
70 2022-03-23T11:00:00Z;1158,40;1000,00;4,0;-1,4;0;1,4;0;0;0;0;0;-1,4;0;1,4;-1,4;0;1,4;0;0;0;0;0;-1,4;0;1,4
71 2022-03-23T12:00:00Z;1158,40;1000,00;4,0;-1,4;0;1,4;0;0;0;0;0;-1,4;0;1,4;-1,4;0;1,4;0;0;0;0;0;-1,4;0;1,4
72 2022-03-23T13:00:00Z;1158,40;1000,00;4,0;-1,4;0;1,4;0;0;0;0;0;-1,4;0;1,4;-1,4;0;1,4;0;0;0;0;0;-1,4;0;1,4
73 2022-03-23T14:00:00Z;1158,40;1000,00;4,0;-1,4;0;1,4;0;0;0;0;0;-1,4;0;1,4;-1,4;0;1,4;0;0;0;0;0;-1,4;0;1,4
74 2022-03-23T15:00:00Z;1158,40;1000,00;4,0;-1,4;0;1,4;0;0;0;0;0;-1,4;0;1,4;-1,4;0;1,4;0;0;0;0;0;-1,4;0;1,4
```

- No structural changes  
- Only label change  
- This is similar to the Market Results file retrievable from ETS Client

# ETS API SCO Example

## Retrieve Trade Reports – Response

```
316 <PriceIndex>
317   <Currency>EUR</Currency>
318   <Price>1158.40</Price>
319 </PriceIndex>
320 <PriceIndex>
321   <Currency>GBP</Currency>
322   <Price>1000.00</Price>
323 </PriceIndex>
324 <VolumeIndex>4.0</VolumeIndex>
325 </MarketAreaIndex>
326 <TradeArea>
327   <AreaName>NI-SONI-DA</AreaName>
328   <AreaTimeZone>British Standard Time</AreaTimeZone>
329   <MemberDetail>
330     <MemberName>PART1</MemberName>
331   </MemberDetail>
332   <Order>
333     <OrderID>40000001668519</OrderID>
334     <Portfolio>PART1-T01</Portfolio>
335     <OrderType>Scalable Complex</OrderType>
336     <OrderEntryTime>2022-03-22T15:25:57Z</OrderEntryTime>
337     <OrderEntryUser>APIUSER</OrderEntryUser>
338     <SettlementCurrency>GBP</SettlementCurrency>
339     <ScalableComplexOrderDetail>
340       <Paradoxically>0</Paradoxically>
341       <Activation>1</Activation>
342     </ScalableComplexOrderDetail>
343     <Period>
344       <OrderPeriodID>40000006714914</OrderPeriodID>
345       <TradeID>40000006714914</TradeID>
346       <DeliveryStart>2022-03-22T23:00:00Z</DeliveryStart>
347       <DeliveryEnd>2022-03-23T00:00:00Z</DeliveryEnd>
348       <MarketClearingPrice>1000.00</MarketClearingPrice>
349       <ExecutedVolume>-1.4</ExecutedVolume>
350     </Period>
351     <Period>
352       <OrderPeriodID>40000006714915</OrderPeriodID>
353       <TradeID>40000006714915</TradeID>
354       <DeliveryStart>2022-03-23T00:00:00Z</DeliveryStart>
355       <DeliveryEnd>2022-03-23T01:00:00Z</DeliveryEnd>
356       <MarketClearingPrice>1000.00</MarketClearingPrice>
357       <ExecutedVolume>-1.4</ExecutedVolume>
358     </Period>
359     <Period>
360       <OrderPeriodID>40000006714916</OrderPeriodID>
361       <TradeID>40000006714916</TradeID>
362       <DeliveryStart>2022-03-23T01:00:00Z</DeliveryStart>
```

- No structural changes  
- Only label change  
- This is similar to the Trade Report file retrievable from ETS Client



# ETS API SCO Example

## Trade Report

```
File Edit Search View Encoding Language Settings Tools Macro Run Plugins Window ?
VT1-Part1-PM1_20220426132823_20220426133118_20220426161720 (2).xml 20220513140000_TradeReport_EPEX_SEM-DA_PWR-MRC-D+1.xml
314 <PriceIndex>
315 <Currency>GBP</Currency>
316 <Price>1875.00</Price>
317 </PriceIndex>
318 <VolumeIndex>2.0</VolumeIndex>
319 </MarketAreaIndex>
320 <TradeArea>
321 <AreaName>NI-SONI-DA</AreaName>
322 <AreaTimeZone>Central European Time</AreaTimeZone>
323 <MemberDetail>
324 <MemberName>A2A</MemberName>
325 <Order>
326 <OrderID>10000001669943</OrderID>
327 <OrderType>Scalable Complex</OrderType>
328 <OrderEntryTime>2022-05-13T07:53:22Z</OrderEntryTime>
329 <OrderEntryUser>EPEXMO4</OrderEntryUser>
330 <SettlementCurrency>EUR</SettlementCurrency>
331 <ScalableComplexOrderDetail>
332 <Paradoxically>0</Paradoxically>
333 <Activation>1</Activation>
334 </ScalableComplexOrderDetail>
335 <Period>
336 <OrderPeriodID>10000006734850</OrderPeriodID>
337 <TradeID>10000006734850</TradeID>
338 <DeliveryStart>2022-05-13T22:00:00Z</DeliveryStart>
339 <DeliveryEnd>2022-05-13T23:00:00Z</DeliveryEnd>
340 <MarketClearingPrice>1250.00</MarketClearingPrice>
341 <ExecutedVolume>-2.0</ExecutedVolume>
342 </Period>
343 <Period>
344 <OrderPeriodID>10000006734851</OrderPeriodID>
345 <TradeID>10000006734851</TradeID>
346 <DeliveryStart>2022-05-13T23:00:00Z</DeliveryStart>
347 <DeliveryEnd>2022-05-14T00:00:00Z</DeliveryEnd>
348 <MarketClearingPrice>1250.00</MarketClearingPrice>
349 <ExecutedVolume>-2.0</ExecutedVolume>
350 </Period>
351 <Period>
352 <OrderPeriodID>10000006734852</OrderPeriodID>
353 <TradeID>10000006734852</TradeID>
354 <DeliveryStart>2022-05-14T00:00:00Z</DeliveryStart>
355 <DeliveryEnd>2022-05-14T01:00:00Z</DeliveryEnd>
356 <MarketClearingPrice>1250.00</MarketClearingPrice>
357 <ExecutedVolume>-2.0</ExecutedVolume>
358 </Period>
359 <Period>
360 <OrderPeriodID>10000006734853</OrderPeriodID>
361
```

**OrderType:**  
- Label Change

## SCO Training Session Q&A

### Questions on the SCO Training Session?

Any queries or feedback can be sent to [membertest@semopx.com](mailto:membertest@semopx.com) after the meeting.

# Agenda

## SCO Training Session (60 min)

- DEMO in ETS Client
- Overview of API XML Changes
- Training Session Q&A

## Project Management (15 min)

- Project Plan Update

## Simulation Logistics (15 min)

- Simulation Environment Access Details
- Logistics Details

## Member Readiness (15 min)

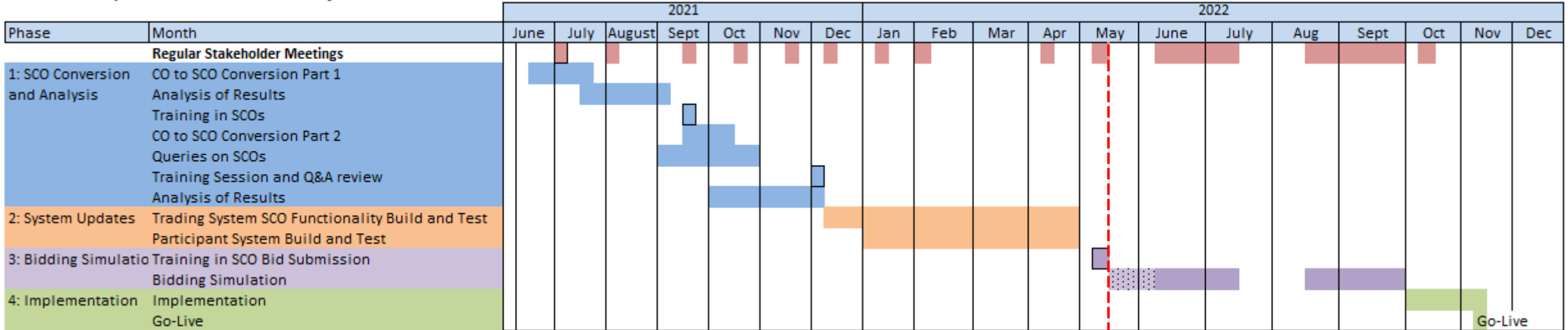
- Update from members on readiness

## Wrap Up (15 min)

- Next Steps
- Q&A

# Project Plan Review

## Scalable Complex Orders - Overview Project Plan



Complete Tasks (since last meeting)	Current Tasks	Future Tasks
Jan-April: Member build of SCO product submission/retrieval	Member Meeting #7 (13 <sup>th</sup> May) Including Member Training Session	Simulation trial Kick-Off Meeting #1 (1 <sup>st</sup> June)
Jan-May: Trading System Build and Test	Simulation environment access details	Testing scheduled in MRC and SEM-GB regions
Simulation Approach Finalised (8 <sup>th</sup> April)	Simulation trial logistics	
Provision of Simulation Sample Files	Simulation environment access (18 <sup>th</sup> May)	
Member Meeting #6 (8 <sup>th</sup> April)	Cont'd: Member Query Submission	

# Agenda

## **SCO Training Session (60 min)**

- DEMO in ETS Client
- Overview of API XML Changes
- Training Session Q&A

## **Project Management (15 min)**

- Project Plan Update

## **Simulation Logistics (15 min)**

- Simulation Environment Access Details
- Logistics Details

## **Member Readiness (15 min)**

- Update from members on readiness

## **Wrap Up (15 min)**

- Next Steps
- Q&A

# Simulation Environment Access Details

- Details on SIMU2 environment below:

Environment	SIMULATION 2
ETS version	ETS Client version 3.6.2 / API version 3.6.1
ETS Server address	ets.svpx.simu2.epexspot.com port 443
API hostname	api1-ets.svpx.simu2.epexspot.com
API port	443
API end point	<a href="https://api1-ets.svpx.simu2.epexspot.com/OpenAccess/3.4">https://api1-ets.svpx.simu2.epexspot.com/OpenAccess/3.4</a> (if using the 3.4.6 schema) <a href="https://api1-ets.svpx.simu2.epexspot.com/OpenAccess/3.5">https://api1-ets.svpx.simu2.epexspot.com/OpenAccess/3.5</a> (if using the 3.5.1 schema) <a href="https://api1-ets.svpx.simu2.epexspot.com/OpenAccess/3.6">https://api1-ets.svpx.simu2.epexspot.com/OpenAccess/3.6</a> (if using the 3.6.1 schema)
API WSDL version	WSDL v3.6.1 Supported API schemas: 3.4.6, 3.5.1, 3.6.1 To retrieve the WSDL: <a href="https://api1-ets.svpx.simu2.epexspot.com/OpenAccess/3.6?wsdl">https://api1-ets.svpx.simu2.epexspot.com/OpenAccess/3.6?wsdl</a>



## Simulation Environment Access Details

- SIMU2 Environment open on 18<sup>th</sup> May 2022\*
- Trial Week #1 – DAM, IDA1, IDA2 & IDA3 auction runs on 7<sup>th</sup> Jun & 9<sup>th</sup> Jun
  - ✓ Target **Tuesday & Thursday** for full participation of SCO bidders
- API Package for ETS 3.6.1 will be available on SEMOpx Website next week.
  - ✓ Communication with details will be issued to SEMOpx members

# Simulation Logistics

Interesting statistics from SEMOpx users (46 API users in logs)\*:

- 30% still use the 3.3 schema that will be decommissioned.
  - ✓ Recommendation to migrate to the new 3.6.1 version
- 60% use 3.4 schema
  - ✓ Members will only need to migrate if they use complex orders (~5 members)
- 10% use 3.5 schema
- Members planning to use SCO will need to upgrade to API 3.6.1 version or ETS Client version 3.6.2

*\*Statistics are taken from February 2021*

# Simulation Logistics

## Market Results D+1 File Example (Production):

Area set	SEM-IDA1										
Auction name	PWR-SEM-GB-D+1										
Auction date time	2022-04-11T16:30:00Z										
FX rates											
EUR	GBP 0.83766125										
Market Area	NI-IDA1										
Index prices	30 EUR										
2022-04-11T22:00:00Z	2022-04-11T22:30:00Z	2022-04-11T23:00:00Z	2022-04-11T23:30:00Z	2022-04-12T00:00:00Z	2022-04-12T00:30:00Z	2022-04-12T01:00:00Z	2022-04-12T01:30:00Z	2022-04-12T02:00:00Z	2022-04-12T02:30:00Z	2022-04-12T03:00:00Z	2022-04-12T03:00:00Z
	186.77	187.56	189.55	186.77	189.55	196.56	190	190	193.18	194.4	211.33
Index prices	30 GBP										
2022-04-11T22:00:00Z	2022-04-11T22:30:00Z	2022-04-11T23:00:00Z	2022-04-11T23:30:00Z	2022-04-12T00:00:00Z	2022-04-12T00:30:00Z	2022-04-12T01:00:00Z	2022-04-12T01:30:00Z	2022-04-12T02:00:00Z	2022-04-12T02:30:00Z	2022-04-12T03:00:00Z	2022-04-12T03:00:00Z
	156.45	157.108	158.779	156.45	158.779	164.655	159.156	159.156	161.819	162.843	177.023
Index volumes	30										
2022-04-11T22:00:00Z	2022-04-11T22:30:00Z	2022-04-11T23:00:00Z	2022-04-11T23:30:00Z	2022-04-12T00:00:00Z	2022-04-12T00:30:00Z	2022-04-12T01:00:00Z	2022-04-12T01:30:00Z	2022-04-12T02:00:00Z	2022-04-12T02:30:00Z	2022-04-12T03:00:00Z	2022-04-12T03:00:00Z
	100.8	98.8	104.1	118.9	120	117.6	141.7	144.5	149.3	152.7	131.8
Net position	30										
2022-04-11T22:00:00Z	2022-04-11T22:30:00Z	2022-04-11T23:00:00Z	2022-04-11T23:30:00Z	2022-04-12T00:00:00Z	2022-04-12T00:30:00Z	2022-04-12T01:00:00Z	2022-04-12T01:30:00Z	2022-04-12T02:00:00Z	2022-04-12T02:30:00Z	2022-04-12T03:00:00Z	2022-04-12T03:00:00Z
	-99	-84.2	-89.6	-105.9	-106.3	-103.8	-129.3	-131.6	-137.2	-140.6	-118.6
Portfolio	SEMOPX GU_501234 30 GBP										
Scalable complex order	SEMOPXAPI										
2022-04-11T22:00:00Z	2022-04-11T22:30:00Z	2022-04-11T23:00:00Z	2022-04-11T23:30:00Z	2022-04-12T00:00:00Z	2022-04-12T00:30:00Z	2022-04-12T01:00:00Z	2022-04-12T01:30:00Z	2022-04-12T02:00:00Z	2022-04-12T02:30:00Z	2022-04-12T03:00:00Z	2022-04-12T03:00:00Z
	0	0	0	0	0	0	0	0	0	0	0
Portfolio	SEMO GU_501212 30 GBP										
Linear order	SEMO-U2										
2022-04-11T22:00:00Z	2022-04-11T22:30:00Z	2022-04-11T23:00:00Z	2022-04-11T23:30:00Z	2022-04-12T00:00:00Z	2022-04-12T00:30:00Z	2022-04-12T01:00:00Z	2022-04-12T01:30:00Z	2022-04-12T02:00:00Z	2022-04-12T02:30:00Z	2022-04-12T03:00:00Z	2022-04-12T03:00:00Z
	0	0	0	0	0	0	0	0	0	0	0

## Market Results D+1 File Example (Simulation):

Area set	SEM-IDA1						NI-SONI-IDA1														
Auction name	PWR-SEM-GB-D+1						Participant: SEMOPX														
Auction date time	2021-01-05T17:30:00Z						Total Sched.														
FX rates							Linear Sched.														
EUR	GBP 0.85091899						Block Sched.														
Period duration	30						Scalable Complex Sched.														
Market area	NI-IDA1																				
	Price Index (EUR/MWh)	Price Index (GBP/MWh)	Volume Index (MW)	ROI-IDA1																	
				Price Index (EUR/MWh)	Volume Index (MW)	MCP (EUR/MWh)	MCP (GBP/MWh)	MCV (MW)	Net	Purchase	Sale	Net	Purchase	Sale	Net	Purchase	Sale	Net	Purchase	Sale	
2021-01-05T23:00:00Z	107.4	91.389	7	107.4	252.2	107.4	91.389	7	0	0	0	0	0	0	0	0	0	0	0	0	0
2021-01-05T23:30:00Z	74	62.968	7.2	74	233.3	74	62.968	7.2	0	0	0	0	0	0	0	0	0	0	0	0	0
2021-01-06T00:00:00Z	83.3	70.882	7	83.3	236.9	83.3	70.882	7	0	0	0	0	0	0	0	0	0	0	0	0	0
2021-01-06T00:30:00Z	71	60.415	4.7	71	190.7	71	60.415	4.7	0	0	0	0	0	0	0	0	0	0	0	0	0
2021-01-06T01:00:00Z	74	62.968	4.1	74	224.5	74	62.968	4.1	0	0	0	0	0	0	0	0	0	0	0	0	0
2021-01-06T01:30:00Z	67.36	57.318	1.4	67.36	189.9	67.36	57.318	1.4	0	0	0	0	0	0	0	0	0	0	0	0	0
2021-01-06T02:00:00Z	69.48	59.122	2.4	69.48	200.9	69.48	59.122	2.4	0	0	0	0	0	0	0	0	0	0	0	0	0
2021-01-06T02:30:00Z	64.87	55.199	1.3	64.87	163.4	64.87	55.199	1.3	0	0	0	0	0	0	0	0	0	0	0	0	0
2021-01-06T03:00:00Z	61	51.906	2.6	61	105.6	61	51.906	2.6	0	0	0	0	0	0	0	0	0	0	0	0	0
2021-01-06T03:30:00Z	60.44	51.43	1.9	60.44	97.2	60.44	51.43	1.9	0	0	0	0	0	0	0	0	0	0	0	0	0
2021-01-06T04:00:00Z	64.87	55.199	1.7	64.87	158.6	64.87	55.199	1.7	0	0	0	0	0	0	0	0	0	0	0	0	0
2021-01-06T04:30:00Z	64.87	55.199	2.5	64.87	156.5	64.87	55.199	2.5	0	0	0	0	0	0	0	0	0	0	0	0	0
2021-01-06T05:00:00Z	60	51.055	0.9	60	120.9	60	51.055	0.9	0	0	0	0	0	0	0	0	0	0	0	0	0
2021-01-06T05:30:00Z	63.58	54.101	3.5	63.58	119.9	63.58	54.101	3.5	0	0	0	0	0	0	0	0	0	0	0	0	0
2021-01-06T06:00:00Z	51	43.397	2.8	51	207.7	51	43.397	2.8	0	0	0	0	0	0	0	0	0	0	0	0	0
2021-01-05T23:00:00Z						107.4	91.389	7	0	0	0	0	0	0	0	0	0	0	0	0	0
2021-01-05T23:30:00Z						74	62.968	7.2	0	0	0	0	0	0	0	0	0	0	0	0	0
2021-01-06T00:00:00Z						83.3	70.882	7	0	0	0	0	0	0	0	0	0	0	0	0	0
2021-01-06T00:30:00Z						71	60.415	4.7	0	0	0	0	0	0	0	0	0	0	0	0	0
2021-01-06T01:00:00Z						74	62.968	4.1	0	0	0	0	0	0	0	0	0	0	0	0	0
2021-01-06T01:30:00Z						67.36	57.318	1.4	0	0	0	0	0	0	0	0	0	0	0	0	0
2021-01-06T02:00:00Z						69.48	59.122	2.4	0	0	0	0	0	0	0	0	0	0	0	0	0
2021-01-06T02:30:00Z						64.87	55.199	1.3	0	0	0	0	0	0	0	0	0	0	0	0	0
2021-01-06T03:00:00Z						61	51.906	2.6	0	0	0	0	0	0	0	0	0	0	0	0	0
2021-01-06T03:30:00Z						60.44	51.43	1.9	0	0	0	0	0	0	0	0	0	0	0	0	0
2021-01-06T04:00:00Z						64.87	55.199	1.7	0	0	0	0	0	0	0	0	0	0	0	0	0
2021-01-06T04:30:00Z						64.87	55.199	2.5	0	0	0	0	0	0	0	0	0	0	0	0	0
2021-01-06T05:00:00Z						60	51.055	0.9	0	0	0	0	0	0	0	0	0	0	0	0	0
2021-01-06T05:30:00Z						63.58	54.101	3.5	0	0	0	0	0	0	0	0	0	0	0	0	0
2021-01-06T06:00:00Z						51	43.397	2.8	0	0	0	0	0	0	0	0	0	0	0	0	0
2021-01-06T07:00:00Z						51	43.397	5	0	0	0	0	0	0	0	0	0	0	0	0	0
2021-01-06T07:30:00Z						73.05	62.16	30.2	0	0	0	0	0	0	0	0	0	0	0	0	0
2021-01-06T08:00:00Z						86	73.179	94	0	0	0	0	0	0	0	0	0	0	0	0	0
2021-01-06T08:30:00Z						94.61	80.505	92	0	0	0	0	0	0	0	0	0	0	0	0	0
2021-01-06T09:00:00Z						109.04	92.784	49.9	0	0	0	0	0	0	0	0	0	0	0	0	0
2021-01-06T09:30:00Z						120	102.11	48.9	0	0	0	0	0	0	0	0	0	0	0	0	0

# Simulation Logistics

## SCO BidFile Example (Production):

Area set	SEM-IDA1																						
Auction name	PWR-SEM-G8-D+1																						
Auction date time	2022-04-11T16:30:00Z																						
PO	SEMOPX	GU_401234	ROI-EIRGRID-IDA1	30	EUR	N																	
SC	4E+13	SEMOPXAPI	SEMOPX	2022-04-11T15:47:29Z	Fixed term	520189.78	Increase gradient	718	Decrease gradient	708	Scheduled stop periods	0	Paradoxically rejected	1	Activation	0							
PR	Period	OrderPeriodID	Active	Execution	MAV	-150	90	90	123.46	123.46	128.41	128.41	130.86	130.86	133.33	133.33	136.1	136.1	138.23	138.23	141.31	141.31	
VL	2022-04-11T22:00:00Z	4E+13	Y	0	102	0	0	-121					-121	-161			-161	-201			-201	-241	
VL	2022-04-11T22:30:00Z	4E+13	Y	0	102	0	0	-121					-121	-161			-161	-201			-201	-241	
VL	2022-04-11T23:00:00Z	4E+13	Y	0	102	0	0	-121					-121	-161			-161	-201			-201	-241	
VL	2022-04-11T23:30:00Z	4E+13	Y	0	102	0	0	-121					-121	-161			-161	-201			-201	-241	
VL	2022-04-12T00:00:00Z	4E+13	Y	0	102	0	0	-121					-121	-161			-161	-201			-201	-241	
VL	2022-04-12T00:30:00Z	4E+13	Y	0	102	0	0	-121					-121	-161			-161	-201			-201	-241	
VL	2022-04-12T01:00:00Z	4E+13	Y	0	102	0	0	-121					-121	-161			-161	-201			-201	-241	
VL	2022-04-12T01:30:00Z	4E+13	Y	0	102	0	0	-121					-121	-161			-161	-201			-201	-241	
VL	2022-04-12T02:00:00Z	4E+13	Y	0	102	0	0	-121					-121	-161			-161	-201			-201	-241	
VL	2022-04-12T02:30:00Z	4E+13	Y	0	102	0	0	-121					-121	-161			-161	-201			-201	-241	
VL	2022-04-12T03:00:00Z	4E+13	Y	0	102	0	0	-121					-121	-161			-161	-201			-201	-241	
VL	2022-04-12T03:30:00Z	4E+13	Y	0	102	0	0	-121					-121	-161			-161	-201			-201	-241	
VL	2022-04-12T04:00:00Z	4E+13	Y	0	102	0	0	-121	-121	-161	-161	-201			-201	-241			-241	-281			
VL	2022-04-12T04:30:00Z	4E+13	Y	0	102	0	0	-121	-121	-161	-161	-201			-201	-241			-241	-281			
PO	SEMO	GU_401212	ROI-EIRGRID-IDA1	30	EUR	N																	
SL	4E+13	SEMOAPI	SEMO	2022-04-11T13:07:07Z																			
PR	Period	OrderPeriodID	Active	Execution		-150	3000																
VL	2022-04-11T22:00:00Z	4E+13	N	0	0.4	0.4																	
VL	2022-04-11T22:30:00Z	4E+13	N	0	1.5	1.5																	
VL	2022-04-11T23:00:00Z	4E+13	N	0	0	0																	
VL	2022-04-11T23:30:00Z	4E+13	N	0	1.4	1.4																	
VL	2022-04-12T00:00:00Z	4E+13	N	0	0.6	0.6																	
VL	2022-04-12T00:30:00Z	4E+13	N	0	1.7	1.7																	
VL	2022-04-12T01:00:00Z	4E+13	N	0	0.9	0.9																	
VL	2022-04-12T01:30:00Z	4E+13	N	0	1.8	1.8																	
VL	2022-04-12T02:00:00Z	4E+13	N	0	0.6	0.6																	
VL	2022-04-12T02:30:00Z	4E+13	N	0	1.1	1.1																	
VL	2022-04-12T03:00:00Z	4E+13	N	0	-0.3	-0.3																	
VL	2022-04-12T03:30:00Z	4E+13	N	0	0.5	0.5																	
VL	2022-04-12T04:00:00Z	4E+13	N	0	-0.5	-0.5																	
VL	2022-04-12T04:30:00Z	4E+13	N	0	0.2	0.2																	
VL	2022-04-12T05:00:00Z	4E+13	N	0	-0.6	-0.6																	
VL	2022-04-12T05:30:00Z	4E+13	N	0	-0.1	-0.1																	
VL	2022-04-12T06:00:00Z	4E+13	N	0	-0.2	-0.2																	
VL	2022-04-12T06:30:00Z	4E+13	N	0	0.2	0.2																	
VL	2022-04-12T07:00:00Z	4E+13	N	0	0.1	0.1																	
VL	2022-04-12T07:30:00Z	4E+13	N	0	0.1	0.1																	
VL	2022-04-12T08:00:00Z	4E+13	N	0	-0.4	-0.4																	

SCO Simulation BidFiles – will be provided and published during the Simulation Trial

# Simulation Logistics

## ○ Process for Query Management

- ✓ Members to submit queries / feedback during the Simulation Phase to:  
[membertest@semopx.com](mailto:membertest@semopx.com)
- ✓ New email inbox is dedicated to answering queries during testing and trial phases and separates them from the production queries
- ✓ Queries will be logged in SEMOpx Query Management System for tracking purposes and sent to the relevant teams for responses
- ✓ Aim to resolve access and credential issues related queries within a few hours
- ✓ Aim to resolve urgent queries within 2 days\*
- ✓ Member queries or feedback will then be summarised in the Friday Participant Calls

*\*Dependant on complexity of query*

# Simulation Logistics

- **Participant Calls from 09:30 – 10:00am:**
  - ✓ PT Call on Weds, 1<sup>st</sup> June 2022 – to run through Week #1 Runsheet
  - ✓ PT Call on Fri, 10<sup>th</sup> June 2022 – to review queries / feedback and analysis from Week #1
  - ✓ PT Call on Mon, 13<sup>th</sup> June 2022 – to run through Week #2 Runsheet
  - ✓ PT Call on Fri, 17<sup>th</sup> June 2022 – to review queries / feedback and analysis from Week #2
- **Dial-in details via MS Teams:**
  - ✓ Issued prior to the Trial Week
  - ✓ Link will be provided in Runsheet.

# Simulation Logistics



## Sample Runsheet:

Final  
Runsheet will  
be publish  
the week  
prior to the  
Trial Week

### SEMOpX Scalable Complex Orders Project Runsheet

#### Trial Week 1: 6<sup>th</sup> June to 10<sup>th</sup> June 2022

Scenario: **High Demand & Low Wind**

Trade Date used for Simulation: **06/01/2021**

Orderbook Opening Time: **D-19\***

*\*the D-19 is applicable as of 3.6.1 is released in SIMU2 (otherwise D-19 is correct but in 3.5.3 version members cannot see SCOs)*

SCO Simulation Trial Runsheet		
Time (BST/IST)	Tuesday, 7th June 2022	Thursday, 9th June 2022
08:30	DAM Gate Closure	DAM Gate Closure
08:45	DAM Results Publication	DAM Results Publication
09:00		
09:15		
09:30	IDA1 Gate Closure	IDA1 Gate Closure
09:45	IDA1 Results Publication	IDA1 Results Publication
10:00		
10:15		
10:30	IDA2 Gate Closure	IDA2 Gate Closure
10:45	IDA2 Results Publication	IDA2 Results Publication
11:00		
11:15		
11:30		
11:45		
12:00		
12:15		
12:30		
12:45		
13:00		
13:15		
13:30		
13:45		
14:00		
14:15		
14:30	IDA3 Gate Closure	IDA3 Gate Closure
14:45	IDA3 Results Publication	IDA3 Results Publication

#### Participant Calls from 09:30 – 10:00am:

- PT Call on 1<sup>st</sup> June 2022 – to run through Week #1 Runsheet
- PT Call on 10<sup>th</sup> June 2022 – to review queries/feedback and analysis from Week #1
- PT Call on 13<sup>th</sup> June 2022 – to run through Week #2 Runsheet
- PT Call on 17<sup>th</sup> June 2022 – to review queries/feedback and analysis from Week #2



#### PT Call via Microsoft Teams meeting:

Join on your computer or mobile app

[Click here to join the meeting](#)

Or call in (audio only)

+44 20 7660 8337, 576288215# United Kingdom, London

Phone Conference ID: 576 288 215#

[Find a local number](#) | [Reset PIN](#)

[Learn More](#) | [Meeting options](#)

#### Full Schedule by Trial Week:

All 4 auctions (DAM, IDA1, IDA2 and IDA3) will run automatically 7 out of 7 days of the week; however, we are targeting full participation of SCO bidders on Tuesdays and Thursdays.

Trial Week	Trial Week Start Dates	Trade Date Simulated	Scenario
Weeks 1 & 2	6 June – 17 June	06/01/2021	High Demand & Low Wind
Weeks 3 & 4	18 June – 1 July	18/07/2021	Low Demand & Low Wind
Week 5	2 July – 8 July	30/09/2021	Low Demand & High Wind
Weeks 6 – 9	9 July – 7 Aug	30/09/2021	Low Demand & High Wind <b>Summer Weeks:</b> <b>No planned simulation activity*</b>
Week 10	8 Aug – 12 Aug	30/09/2021	Low Demand & High Wind
Weeks 11 & 12	13 Aug – 26 Aug	11/02/2021	High Demand & High Wind
Weeks 13 & 14	27 Aug – 9 Sept	TBD	Contingency: Scenario re-run based on member feedback
Weeks 15 & 16	10 Sept – 23 Sept	TBD	Contingency: Scenario re-run based on member feedback
Week 17	24 Sept – 2 Oct	TBD	Contingency: Scenario re-run based on member feedback

*\*Auctions will continue to run automatically during the Summer Weeks (Low Demand & High Wind Scenario – TD 30/09/2021); however, there may not be full SCO participation.*

#### Published Files for Reference:

- [BidFiles \(with Complex Orders\) – DAM, IDA1, IDA2 & IDA3](#)
- [Market Results \(Baseline with CO: From Production\) – DAM & IDA3](#)
- [Market Results \(Baseline with CO: Consolidated Results\) – IDA1 & IDA2](#)

#### Queries / Feedback:

Please do not hesitate to email us at [memberfest@semopx.com](mailto:memberfest@semopx.com) during the Simulation Phase.]

## Simulation Logistics

- High-Level Analysis will focus on the following:
  - ✓ Participation Level (ie. Average number of units that submitted Scalable Complex Orders)
  - ✓ Number of units that cleared with Scalable Complex Orders compared to baseline results (Complex Orders)
  - ✓ Prices (High, Average & Low)
  - ✓ Volumes cleared
  - ✓ Share member feedback and observations
- Participants are encouraged to complete their own detailed analysis
- Consolidated Baseline Market Results for IDA1 & IDA2 (for 4 Trade Date Scenarios) can be found [here](#).



# Agenda

## **SCO Training Session (60 min)**

- DEMO in ETS Client
- Overview of API XML Changes
- Training Session Q&A

## **Project Management (15 min)**

- Project Plan Update

## **Simulation Logistics (15 min)**

- Simulation Environment Access Details
- Logistics Details

## **Member Readiness (15 min)**

- Update from members on readiness

## **Wrap Up (15 min)**

- Next Steps
- Q&A

## Member Readiness

- Ready for simulations from early June?
- Anything else you need?

# Agenda

## SCO Training Session (60 min)

- DEMO in ETS Client
- Overview of API XML Changes
- Training Session Q&A

## Project Management (15 min)

- Project Plan Update

## Simulation Logistics (15 min)

- Simulation Environment Access Details
- Logistics Details

## Member Readiness (15 min)

- Update from members on readiness

## Wrap Up (15 min)

- Next Steps
- Q&A

## Next Steps

- ❑ Simulation Environment open on 18<sup>th</sup> May 2022
  - ✓ Member Testing to commence
  
- ❑ Simulation Kick-off PT call on 1<sup>st</sup> Jun 2022
  
- ❑ First day of auction runs (DAM, IDA1, IDA2 & IDA3) on 7<sup>th</sup> Jun 2022

Questions?