

October-December 2022 Report



Traded (GWh)

YTD 2022	48,496	▲ 1%
YTD 2021	47,877	
Q4 2022	12,977	▲ 1%
Q4 2021	12,820	



Traded (million€)

YTD 2022	€ 11,130.15	▲ 64%
YTD 2021	€ 6,774.75	
Q4 2022	€ 2,508.59	▼ 15%
Q4 2021	€ 2,957.55	



DAM Avg. (MWh/€)

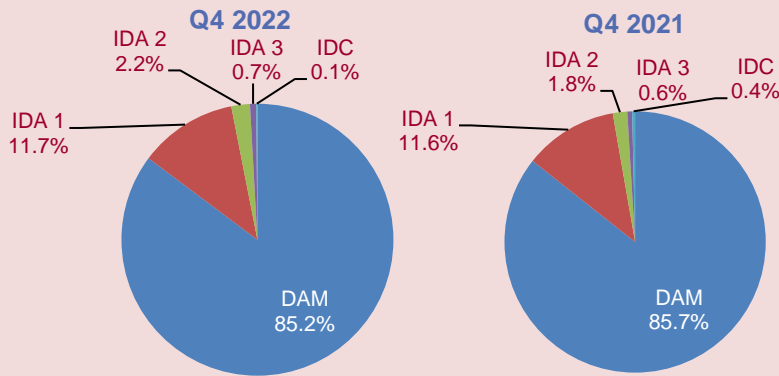
YTD 2022	€ 225.57	▲ 66%
YTD 2021	€ 135.52	
Q4 2022	€ 185.24	▼ 17%
Q4 2021	€ 223.31	

Current Quarter	12,977	▲ 15%
Previous Quarter	11,269	

Current Quarter	€ 2,508.59	▼ 30%
Previous Quarter	€ 3,568.95	

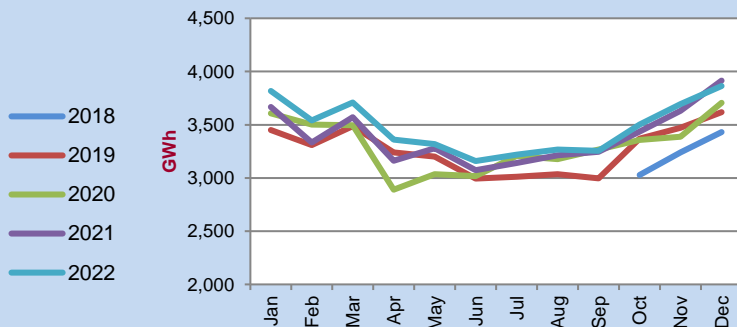
Current Quarter	€ 185.24	▼ 41%
Previous Quarter	€ 312.71	

Share of Traded Volumes by Market (%)

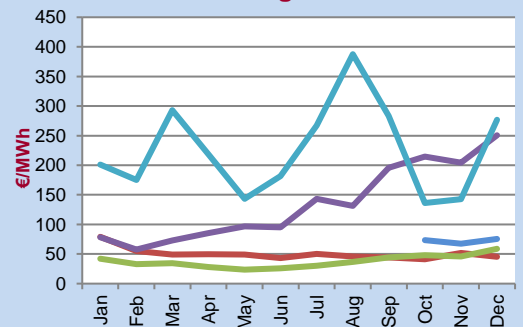


Day-Ahead Market (DAM)

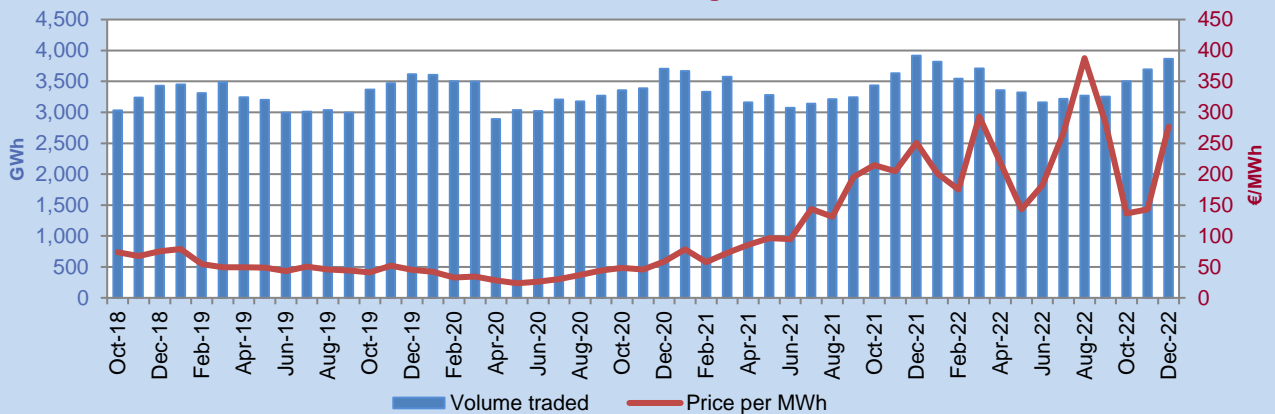
Volume Traded



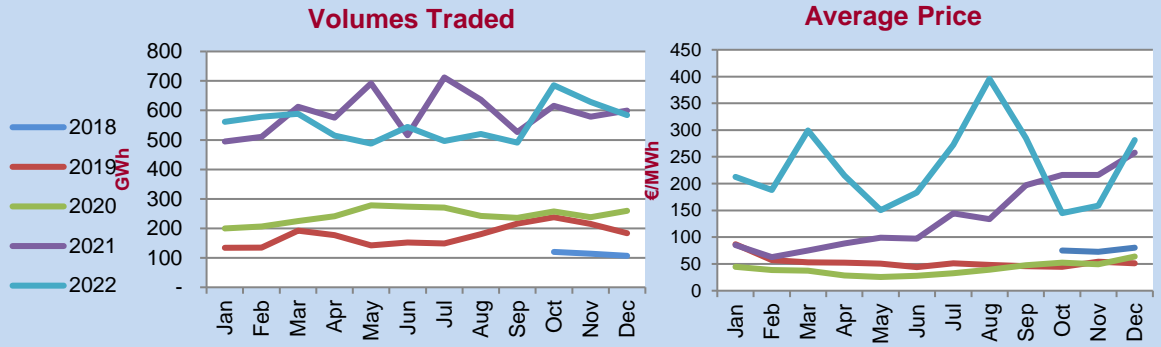
Average Price



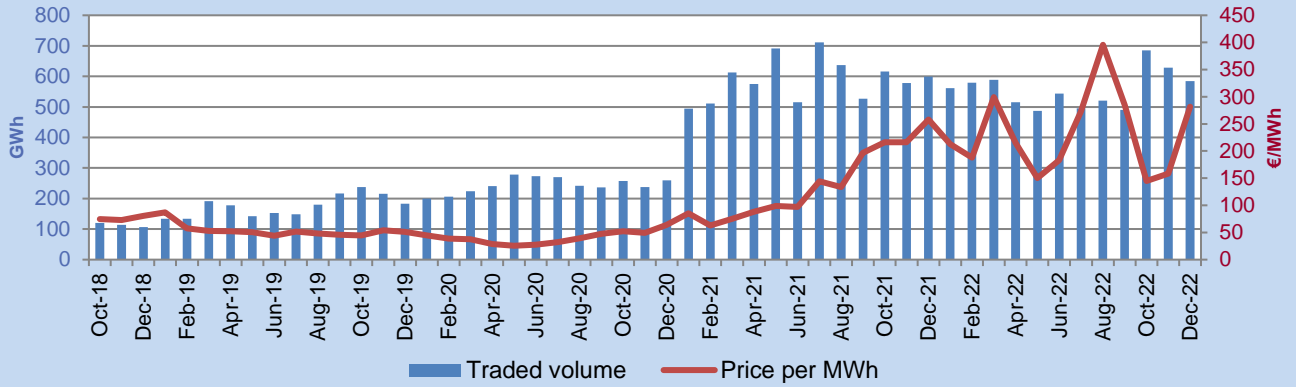
Volume Traded vs Average Price



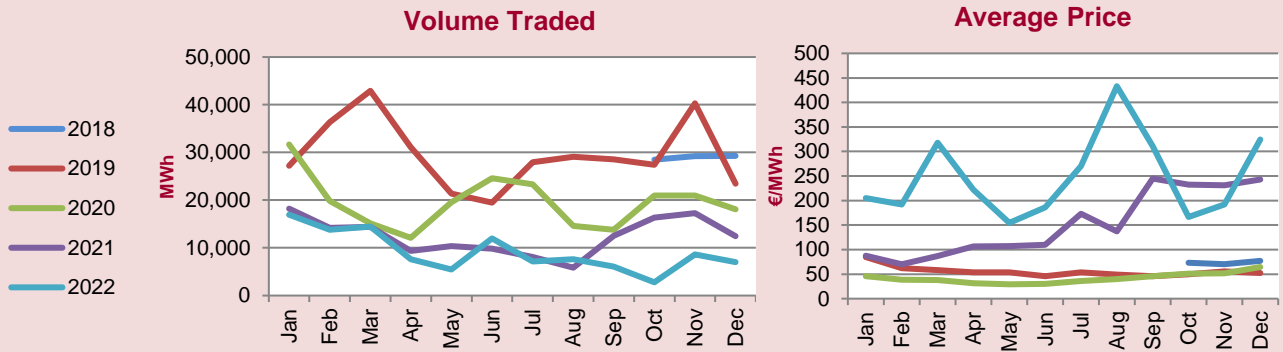
Intraday Market (IDA)



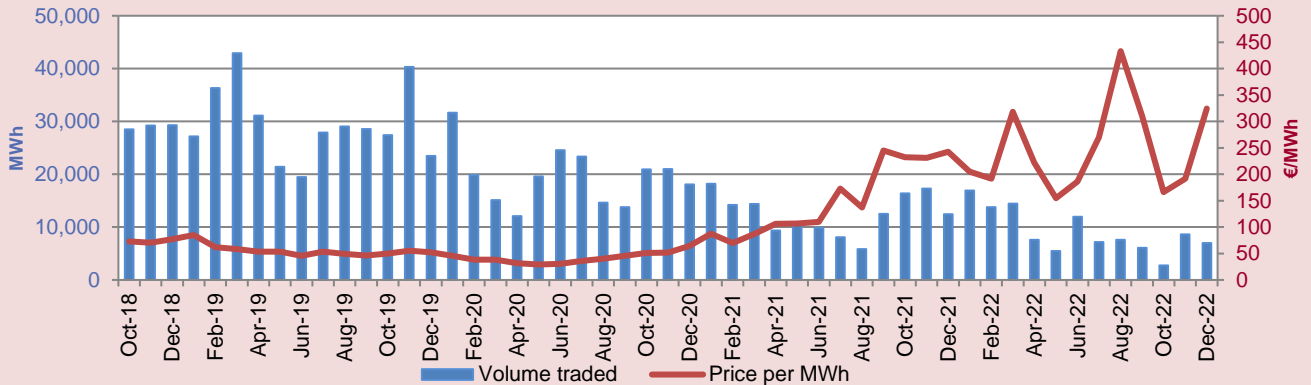
Volume Traded vs Average Price



Intraday Continuous (IDC)



Volume Traded vs Average Price



Telephone:

Ireland
Northern Ireland
International

1800 283 010
0800 008 3010
+353 1 6688183

Email:

info@semopx.com

Website:

www.semopx.com