

November 2022 Report



Traded (GWh)

| | | |
|---------|--------|-----|
| YTD 22 | 44,037 | |
| YTD 21 | 43,350 | ▲2% |
| Nov. 22 | 4,329 | |
| Nov. 21 | 4,228 | ▲2% |

| | | |
|---------|-------|-----|
| Nov. 22 | 4,329 | ▲3% |
| Oct. 22 | 4,189 | |



Traded (million€)

| | | |
|---|----------|------|
| € | 9,850.12 | ▲76% |
| € | 5,597.35 | |
| € | 648.05 | ▼27% |
| € | 890.61 | |

| | | |
|---|--------|------|
| € | 648.05 | ▲12% |
| € | 580.51 | |

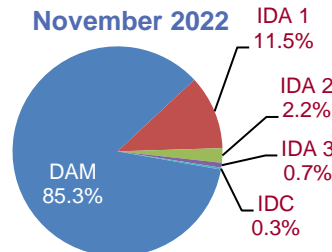
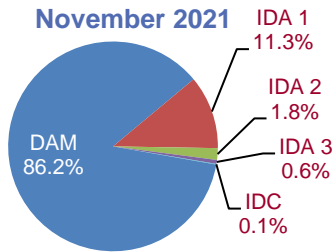


DAM AVG. (€/MWh)

| | | |
|---|--------|------|
| € | 220.92 | ▲77% |
| € | 125.06 | |
| € | 142.87 | ▼30% |
| € | 204.54 | |

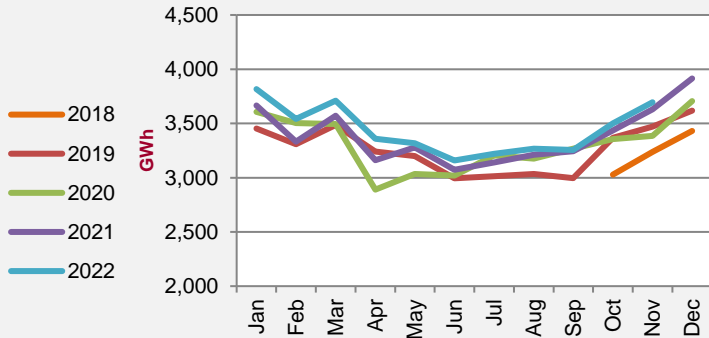
| | | |
|---|--------|-----|
| € | 142.87 | ▲5% |
| € | 136.16 | |

Share of Traded Volumes by Market (%)

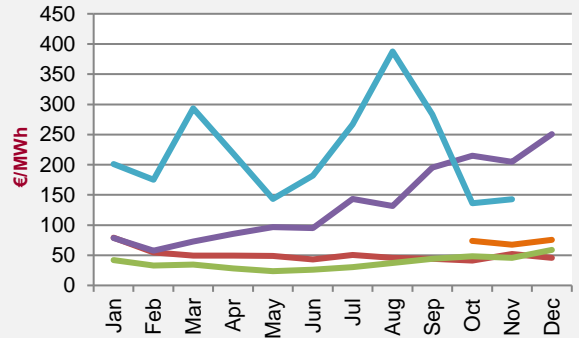


Day-Ahead Market (DAM)

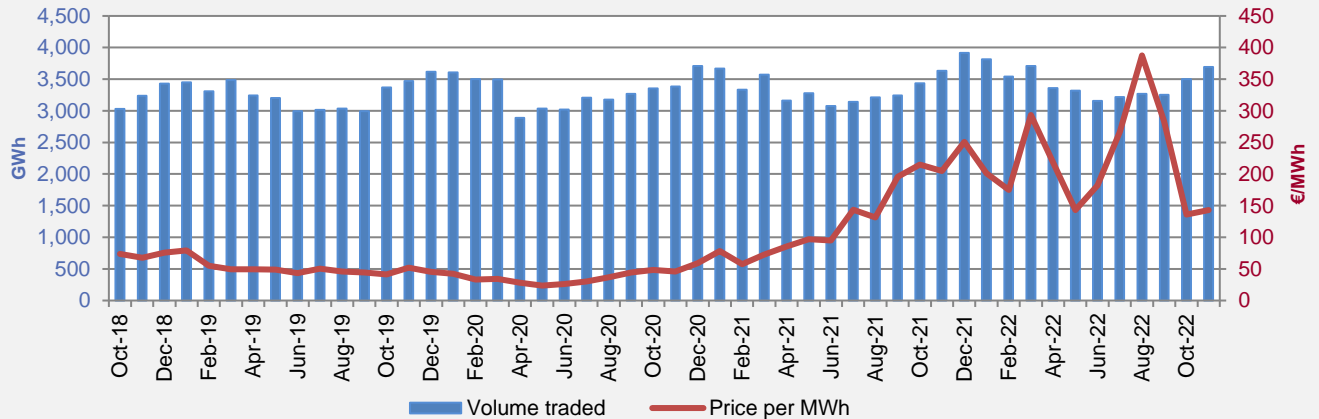
Volume Traded



Average Price

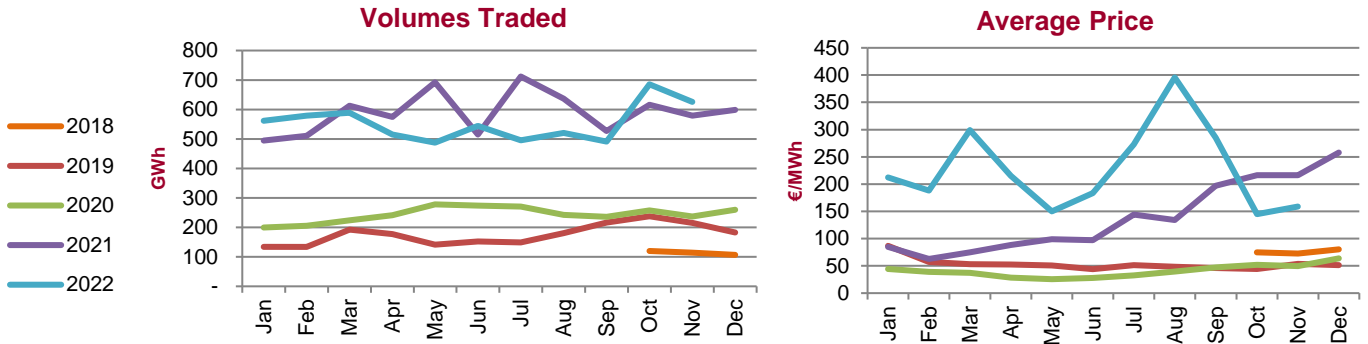


Volume Traded vs Average Price

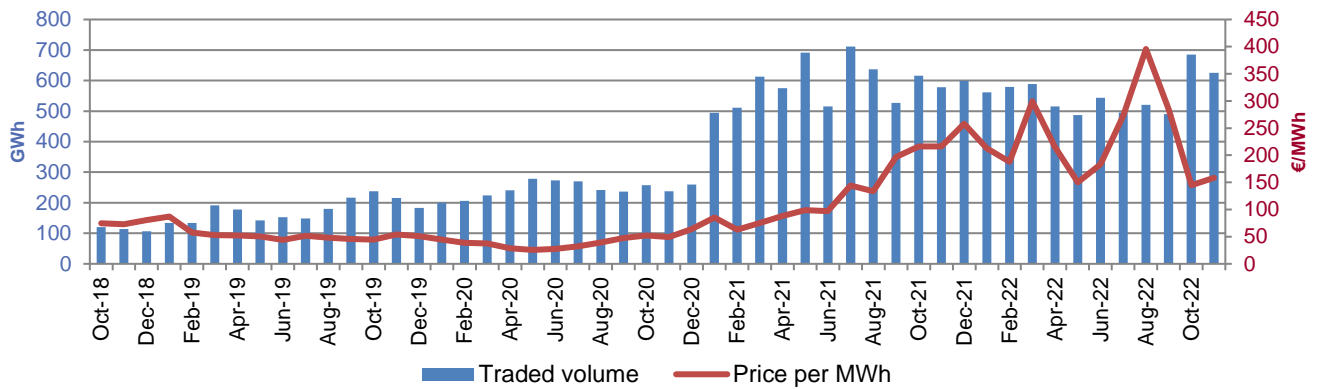


Monthly Market Report

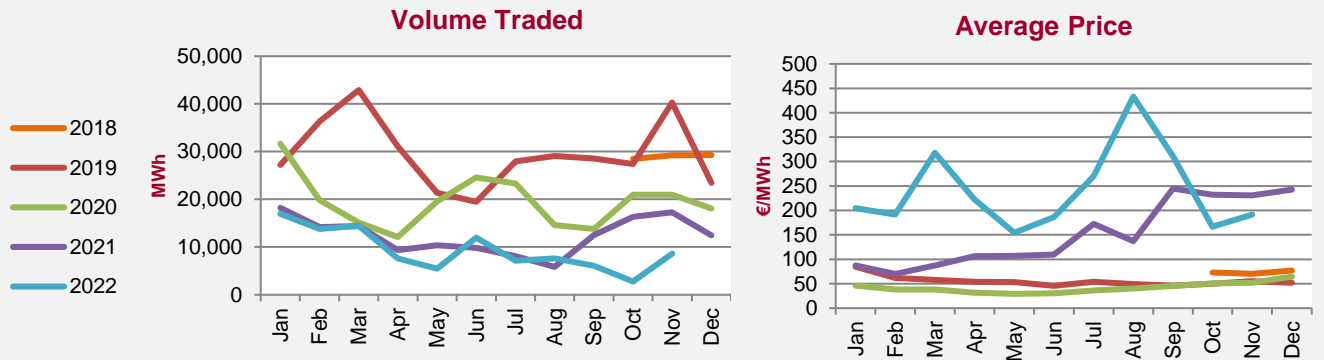
Intraday Market (IDA)



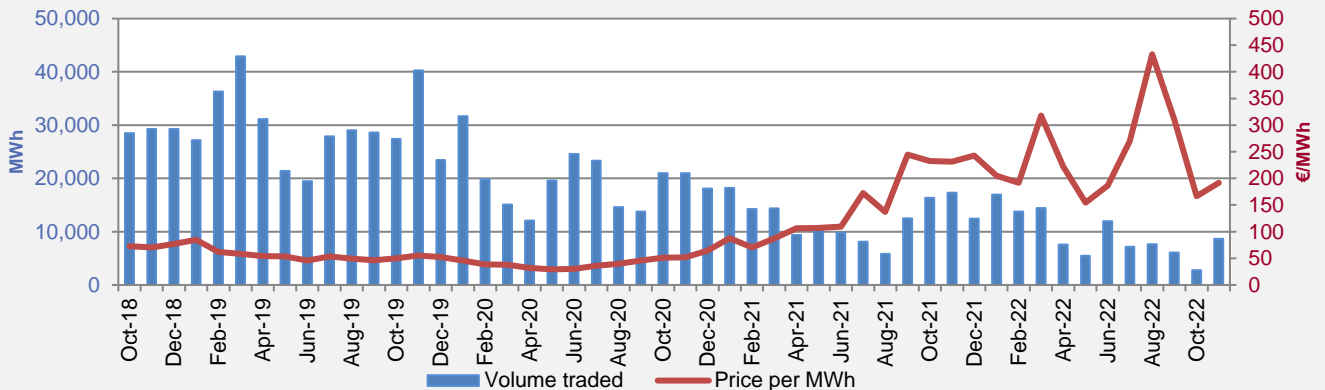
Volume Traded vs Average Price



Intraday Continuous (IDC)



Volume Traded vs Average Price



Telephone:

Ireland 1800 283 010
 Northern Ireland 0800 008 3010
 International +353 1 6688183

Email:

info@semopx.com

Website:

www.semopx.com