

**May 2021 Report**

Email: info@semopx.com  
Website: www.semopx.com

Telephone: 1800 283 010  
Ireland 0800 008 3010  
Northern Ireland +353 1 6688183  
International



**Traded (GWh)**

YTD 21	19,961	▲ 12%
YTD 20	17,773	
May 21	3,980	▲ 19%
May 20	3,332	



**Traded (million €)**

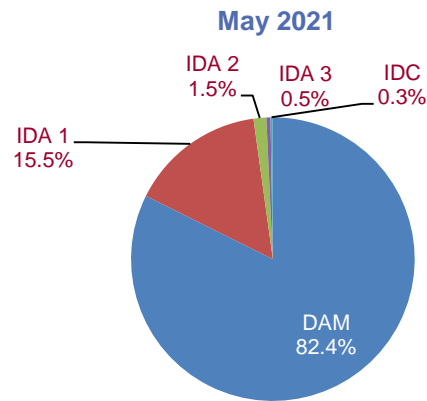
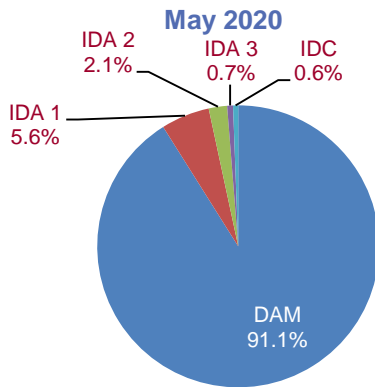
YTD 21	€ 1,620.90	▲ 169%
YTD 20	€ 602.89	
May 21	€ 396.54	▲ 388%
May 20	€ 81.24	



**DAM avg. MWh/€**

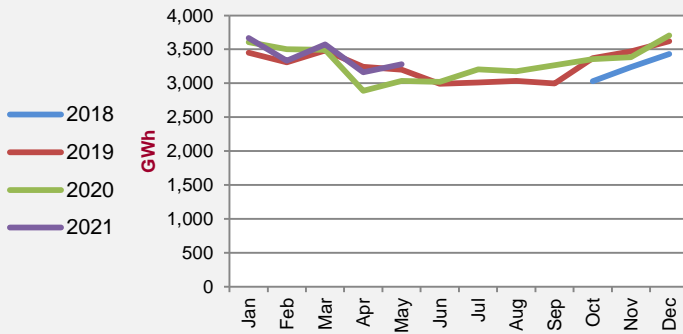
YTD 21	€ 78.19	▲ 143%
YTD 20	€ 32.20	
May 21	€ 96.73	▲ 310%
May 20	€ 23.59	

**Share of Traded Volumes by Market (%)**

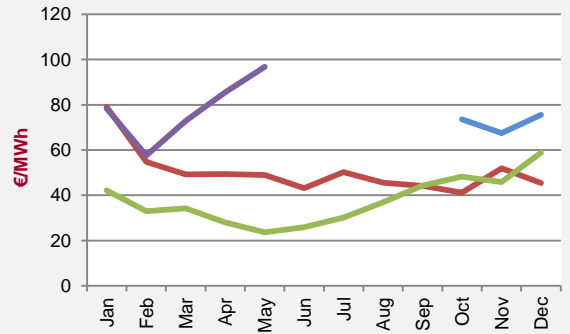


**Day-Ahead Market (DAM)**

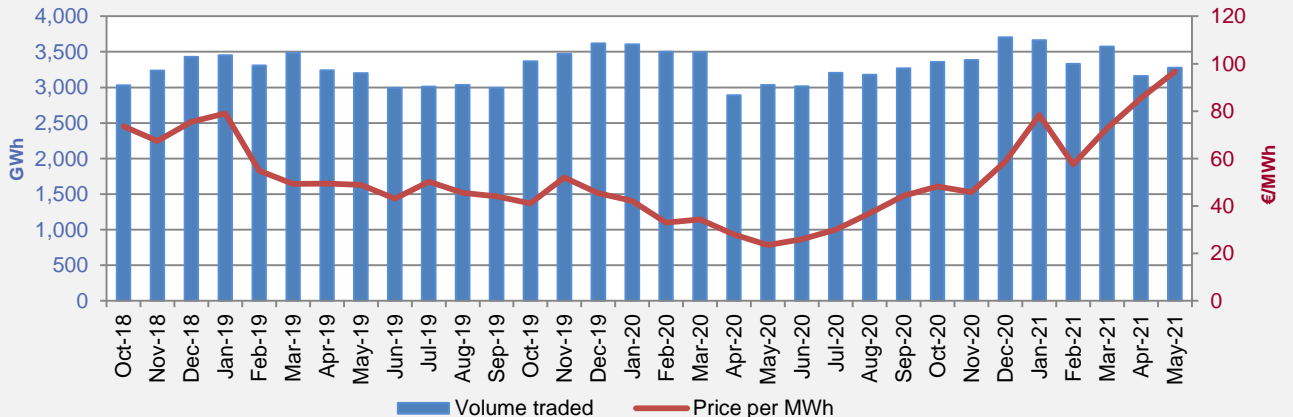
**Volume Traded**



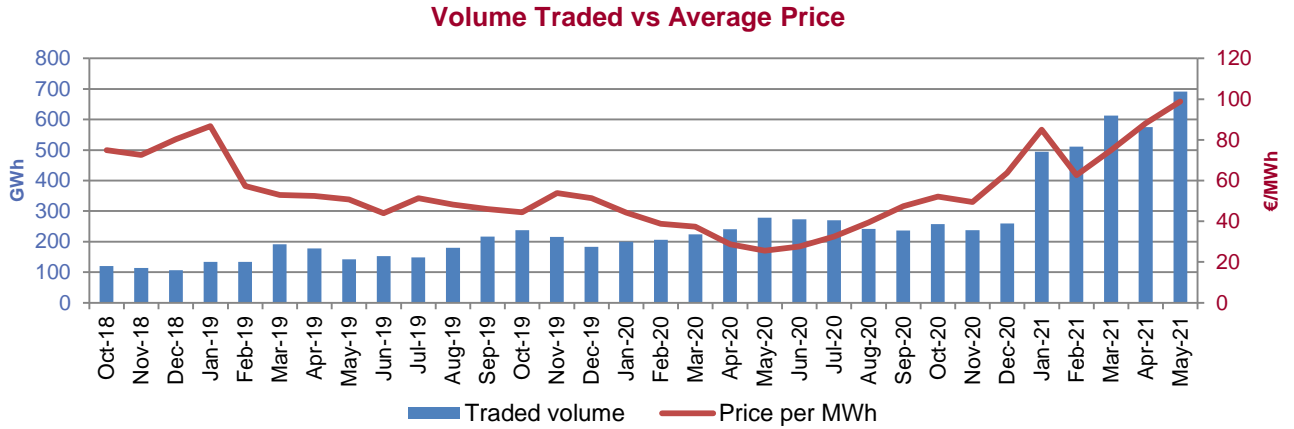
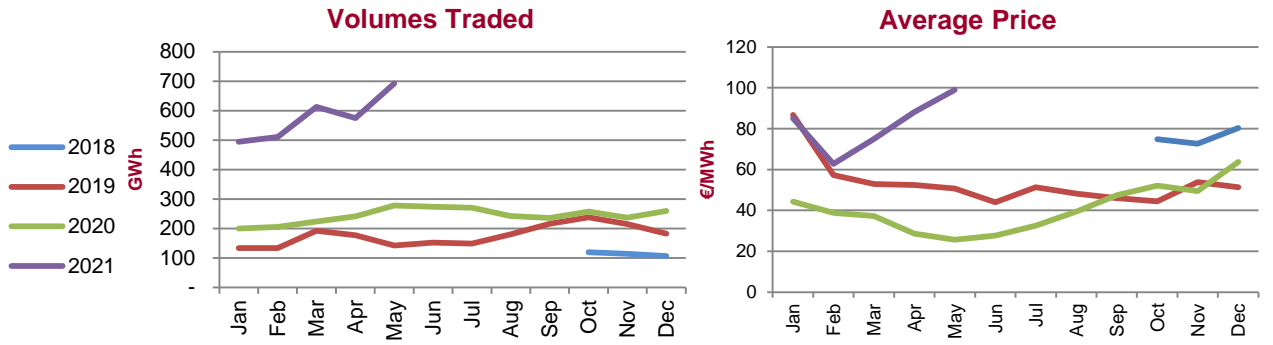
**Average Price**



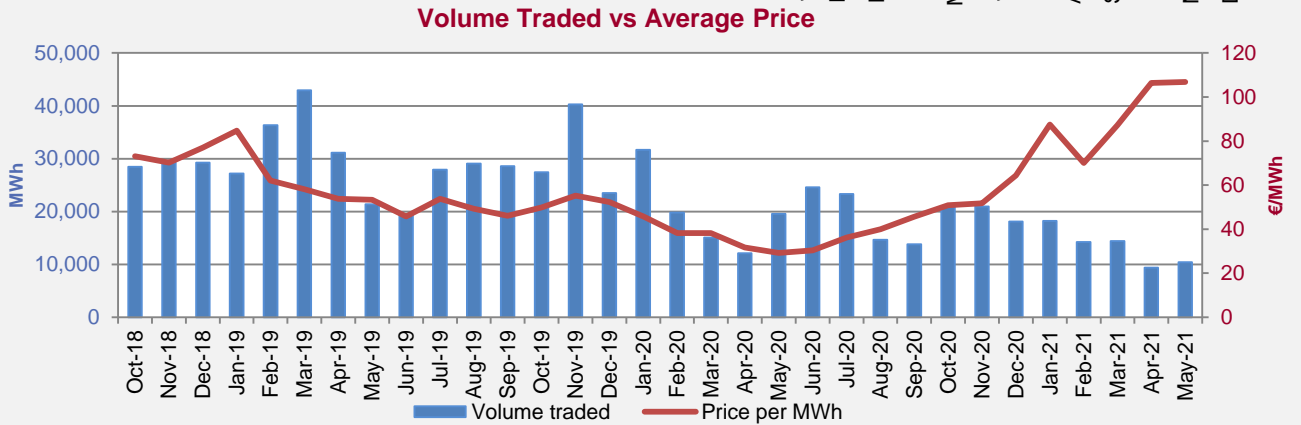
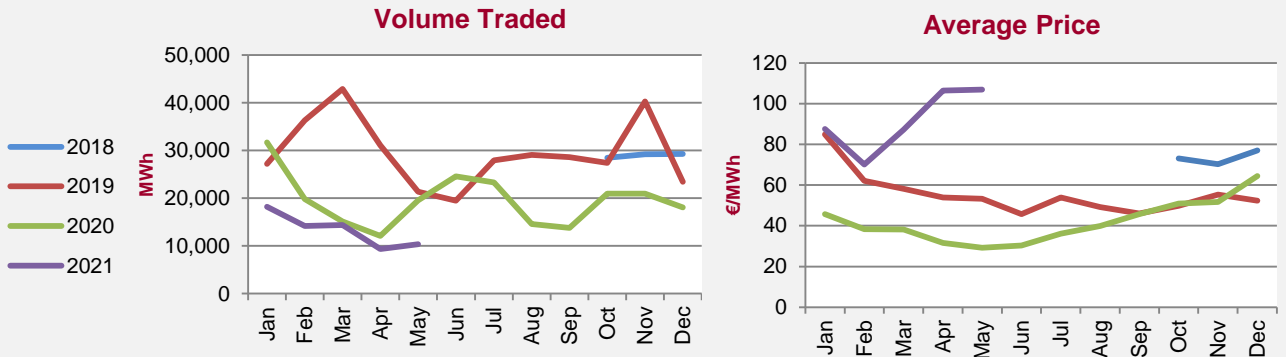
**Volume Traded vs Average Price**



Intraday Market (IDA)



Intraday Continuous (IDC)



**DAM**: single pan-European energy trading platform in the ex-ante time frame for scheduling bids and offers and interconnector flows across regions and power exchanges within Europe. As of 1st of January 2021 SEM will continue to use the pan-European energy trading platform but will operate in isolation without interconnector flows in the day-ahead timeframe.

**IDA 1,2 & 3**: market consisting of three daily auctions that allows members to adjust their physical positions closer to real time. For IDA1 and IDA2 SEM is coupled with the GB bidding area via Moyle and EWIC interconnectors. IDA3 is a local SEM-only auction which is not coupled with the GB bidding area.

**IDC**: local continuous price matching market, allowing members an additional route to market and to adjust their physical positions closer to real time.