

**February 2022 Report**



**Traded (GWh)**

YTD 22	8,516	
YTD 21	8,036	▲6%
Feb. 22	4,121	
Feb. 21	3,858	▲7%

Feb. 22	4,121	▼6%
Jan. 22	4,395	



**Traded (million€)**

€	1,662.21	
€	577.13	▲188%
€	745.09	
€	231.87	▲221%

€	745.09	▼19%
€	917.12	

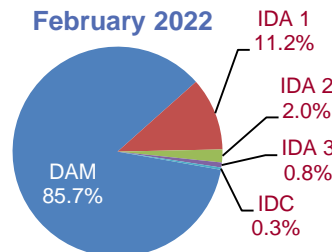
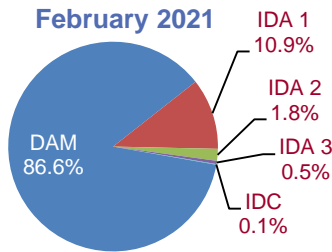


**DAM AVG. (€/MWh)**

€	188.13	
€	67.97	▲177%
€	175.08	
€	57.56	▲204%

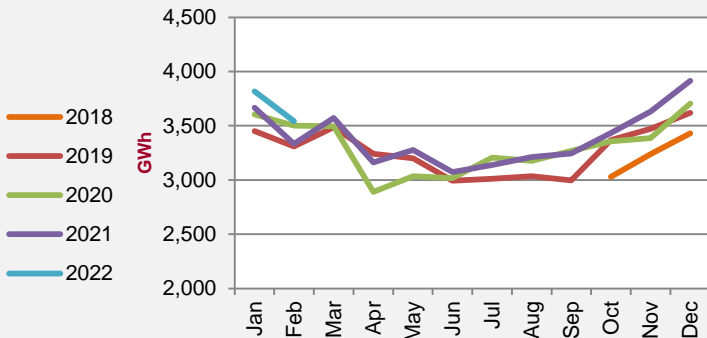
€	175.08	▼13%
€	201.19	

**Share of Traded Volumes by Market (%)**

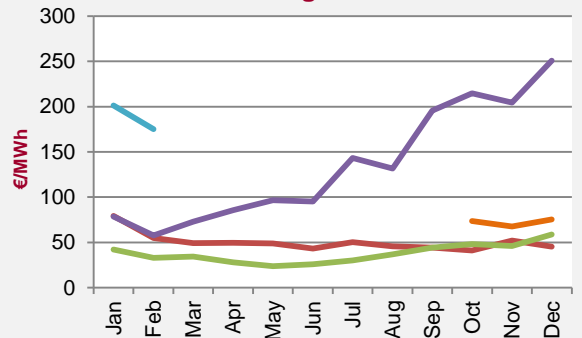


**Day-Ahead Market (DAM)**

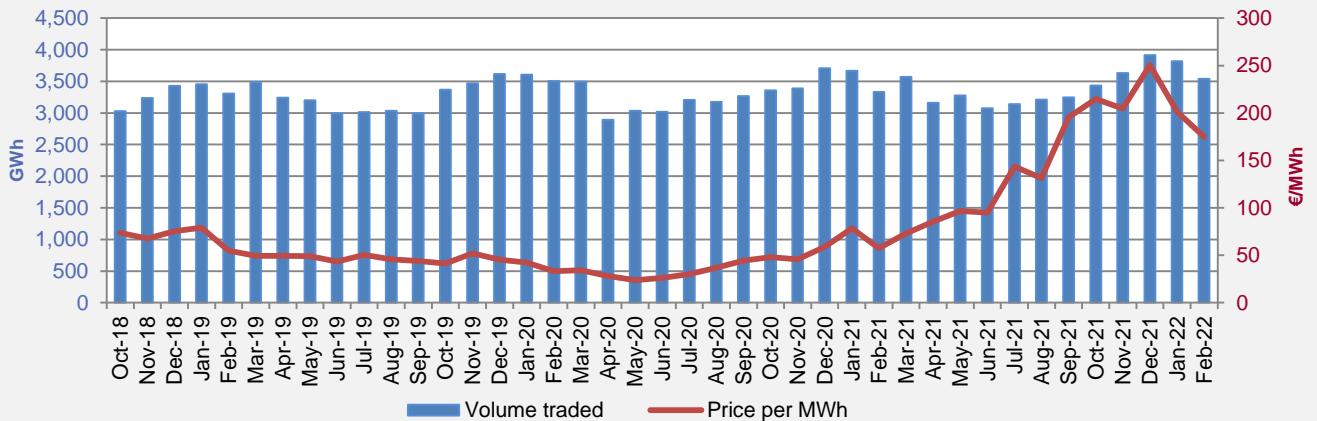
**Volume Traded**



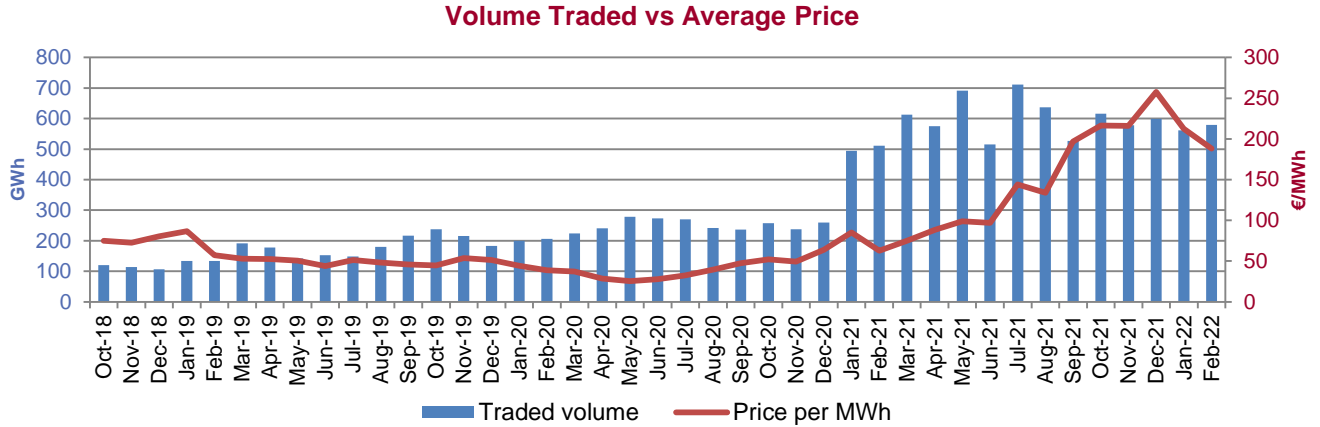
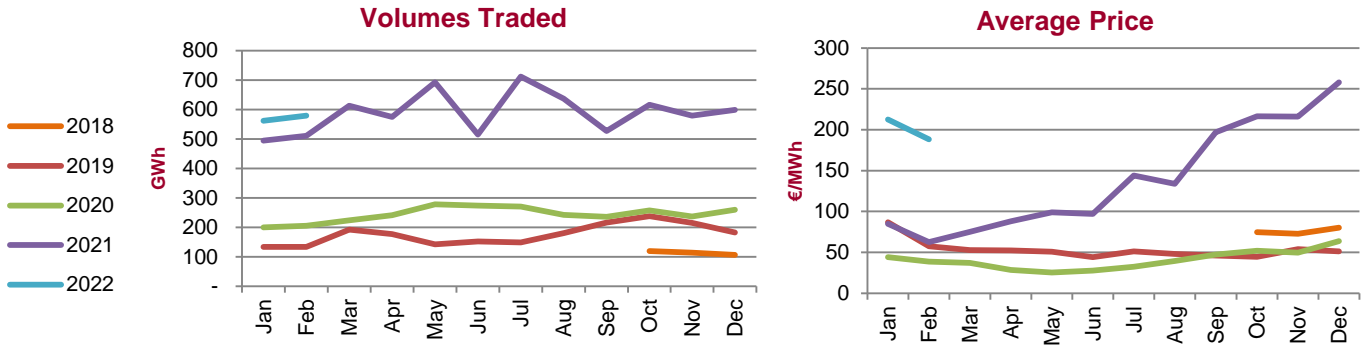
**Average Price**



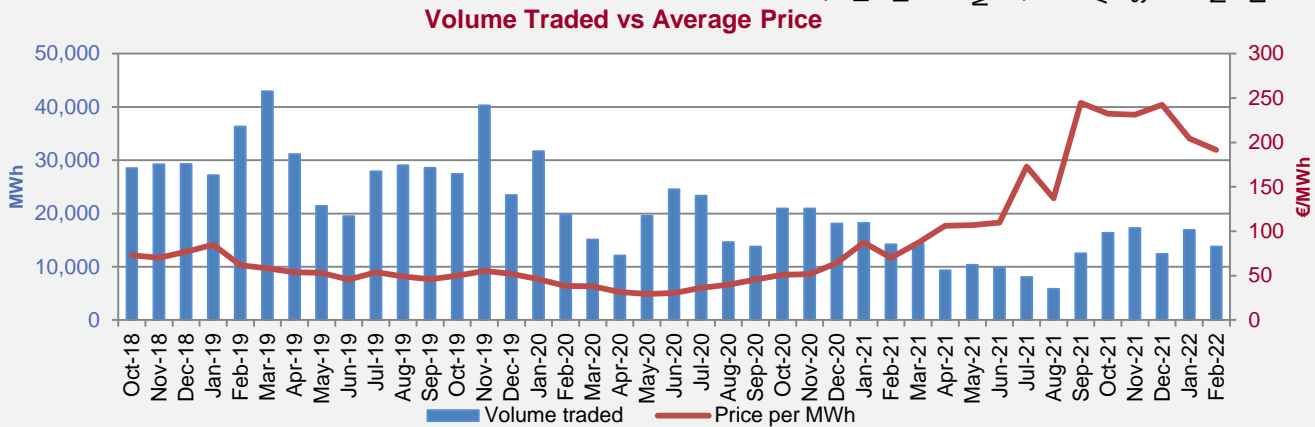
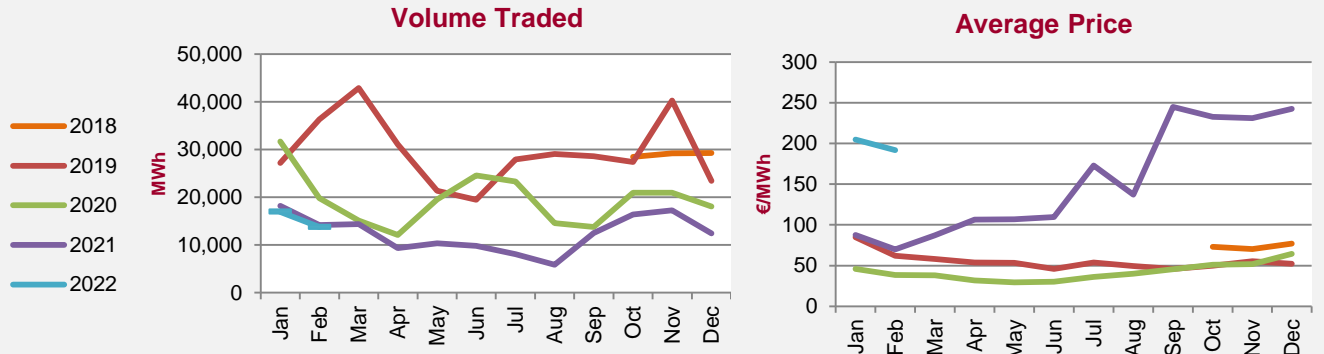
**Volume Traded vs Average Price**



Intraday Market (IDA)



Intraday Continuous (IDC)



**Telephone:**  
 Ireland 1800 283 010  
 Northern Ireland 0800 008 3010  
 International +353 1 6688183

**Email:**  
[info@semopx.com](mailto:info@semopx.com)

**Website:**  
[www.semopx.com](http://www.semopx.com)