

June 2022 Report



Traded (GWh)

YTD 22	24,250	
YTD 21	23,560	▲3%
June 22	3,715	▲3%
June 21	3,598	

June 22	3,715	▼3%
May 22	3,812	



Traded (million€)

€ 5,052.60	▲157%
€ 1,969.23	
€ 687.06	▲97%
€ 348.34	

€ 687.06	▲24%
€ 554.97	

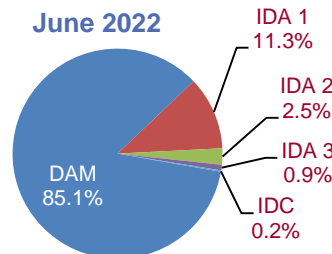
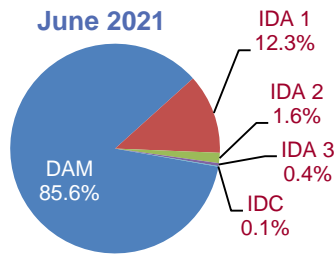


DAM AVG. (€/MWh)

€ 202.16	▲150%
€ 81.00	
€ 181.82	▲91%
€ 95.00	

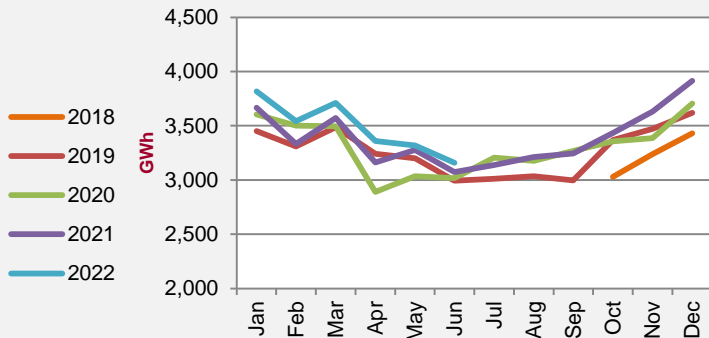
€ 181.82	▲27%
€ 143.16	

Share of Traded Volumes by Market (%)

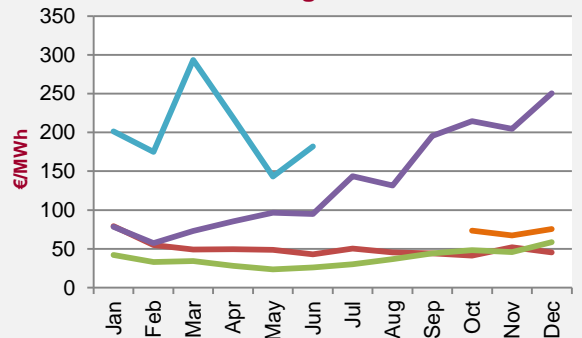


Day-Ahead Market (DAM)

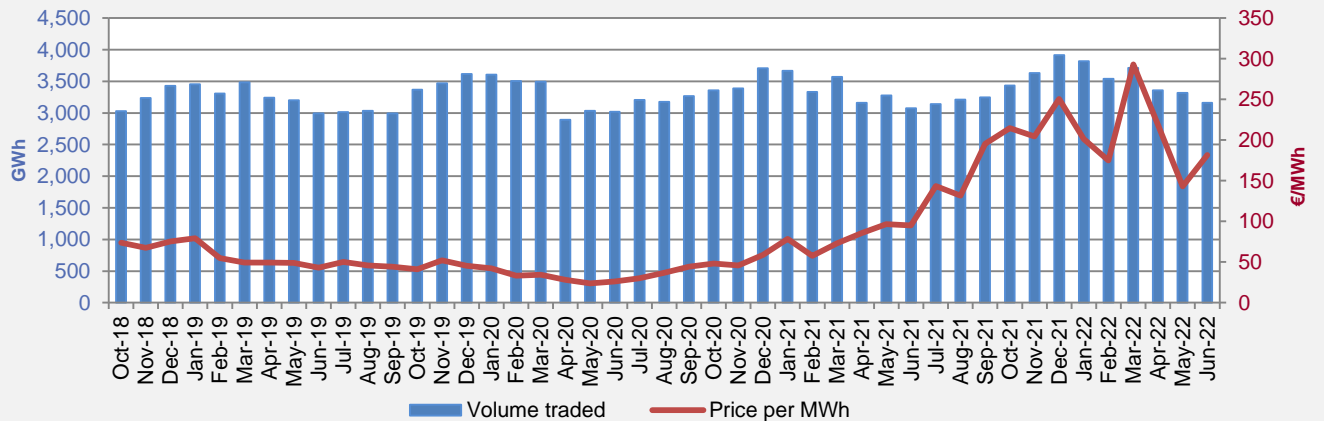
Volume Traded



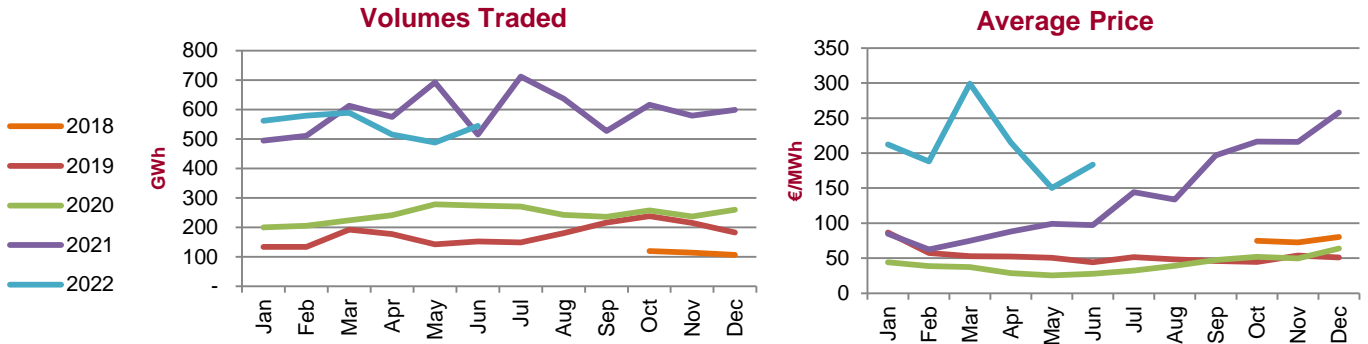
Average Price



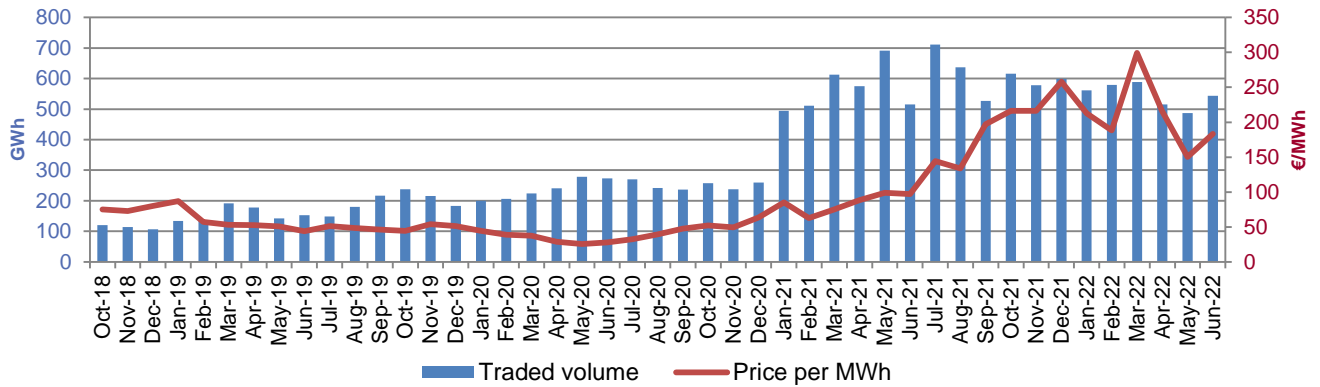
Volume Traded vs Average Price



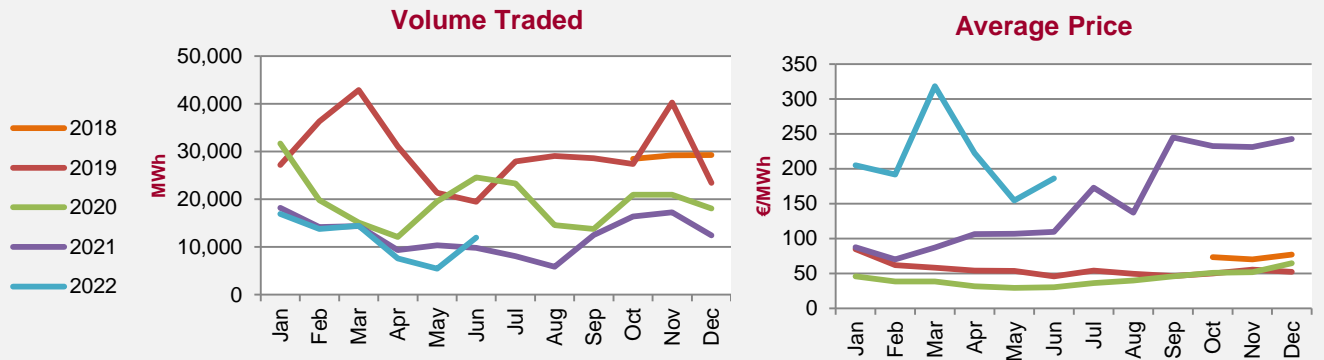
Intraday Market (IDA)



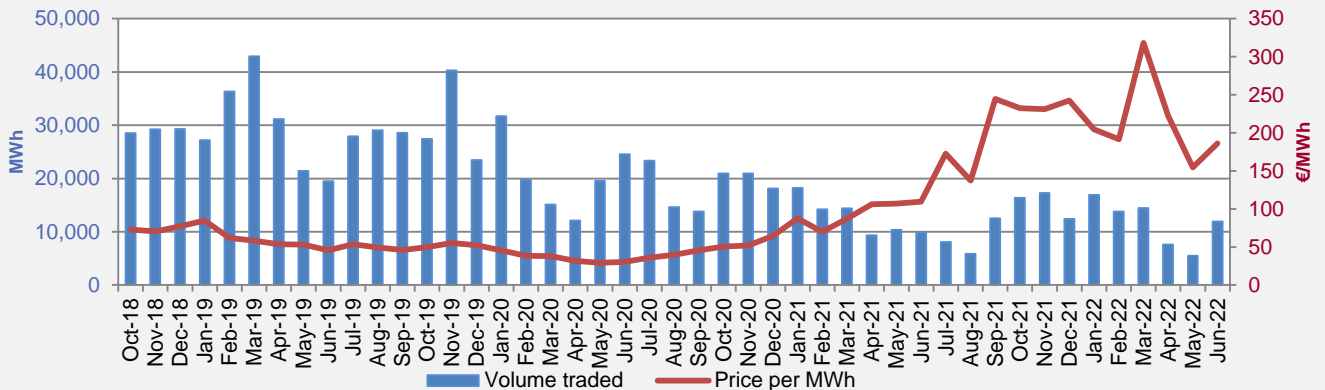
Volume Traded vs Average Price



Intraday Continuous (IDC)



Volume Traded vs Average Price



Telephone:

Ireland 1800 283 010
 Northern Ireland 0800 008 3010
 International +353 1 6688183

Email:

info@semopx.com

Website:

www.semopx.com